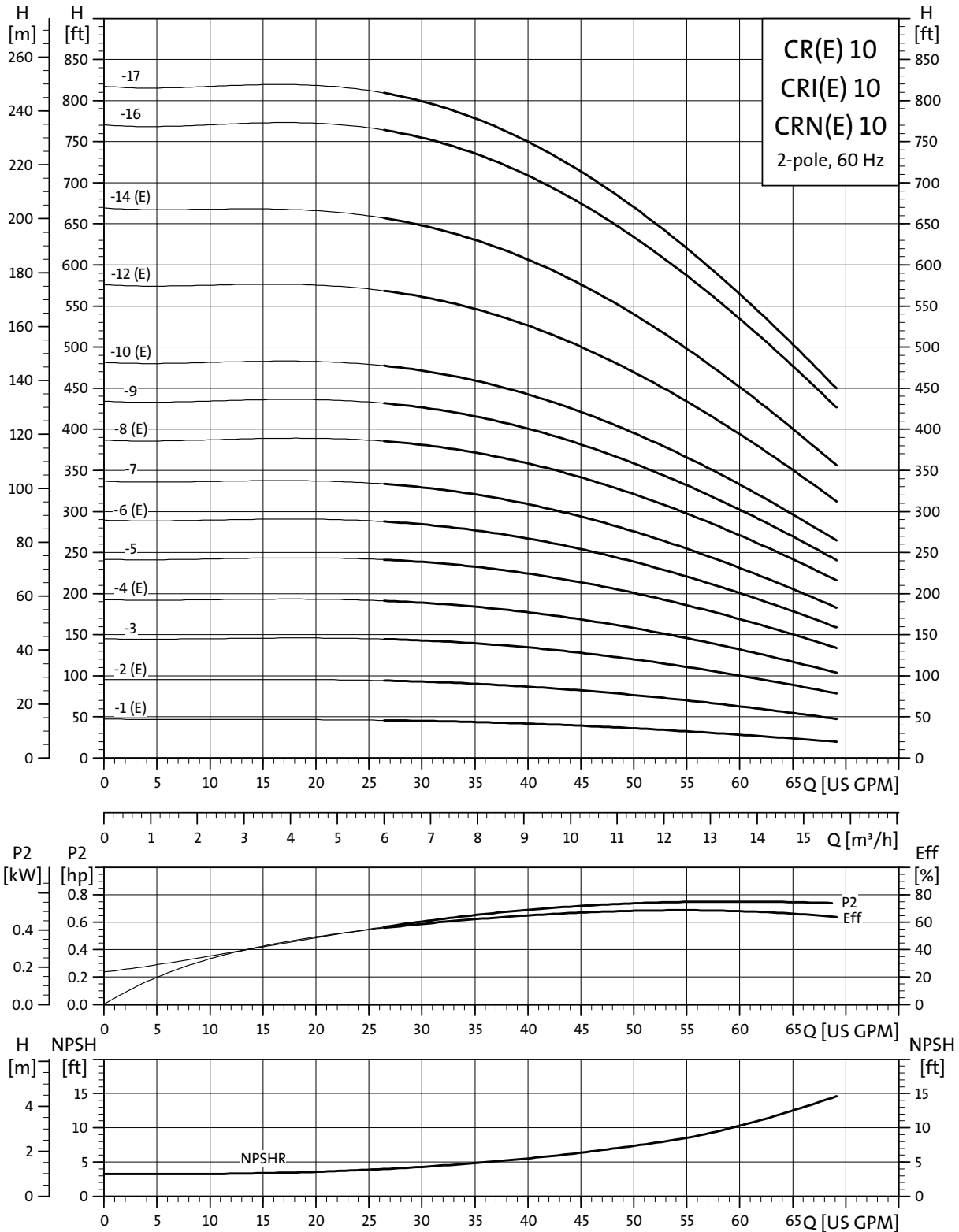
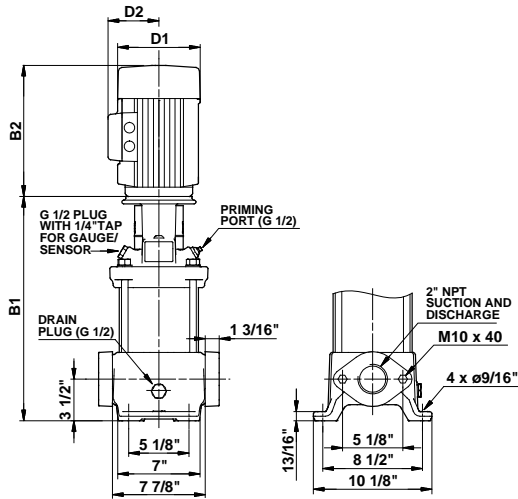


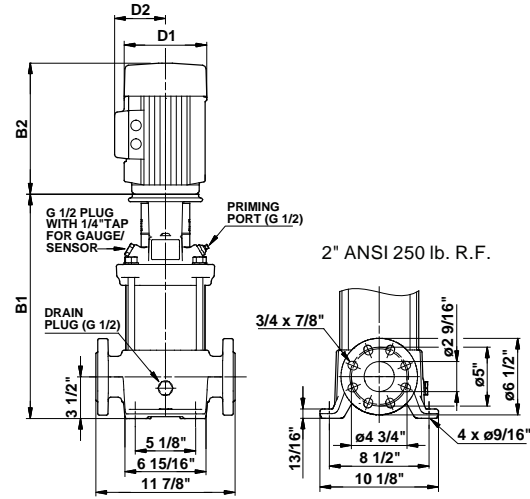
## CR(E), CRI(E), CRN(E) 10



TM02 7221 3704



TM03 1460 2205



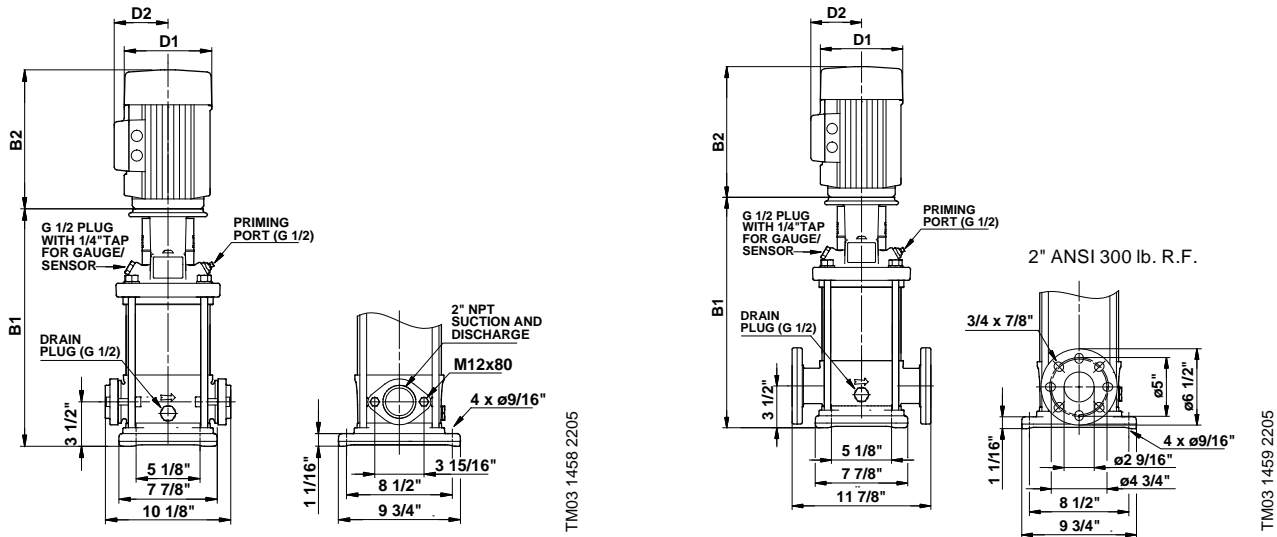
TM03 1461 2205

Pump type	P2 [hp]	Ph.	Oval*	ANSI dimensions [inch]							Ship Wt. [lbs.]	ANSI dimensions [inch]			
				B1	TEFC			ODP				MLE			Ship Wt. [lbs.]
					D1	D2	B1+B2	D1	D2	B1+B2		D1	D2	B1+B2	
CR(E) 10-1	3/4	1	•	15 1/4	6 1/4	5	25 1/8	-	-	-	115	5 1/2	5 1/2	22 3/4	108
		3	•	15 1/4	5 5/8	4 5/8	22 7/8	-	-	-	106	-	-	-	-
CR(E) 10-2	1 1/2	1	•	15 1/4	7 1/4	5 3/4	27	-	-	-	128	5 1/2	5 1/2	24 3/8	115
		3	•	15 1/4	5 5/8	4 5/8	24	-	-	-	106	7	6 5/8	26 3/4	123
CR 10-3	3	1	•	17 1/4	8 5/8	6 7/8	31 5/8	-	-	-	183	-	-	-	-
		3	•	17 1/4	7 1/8	4 3/8	28 7/8	-	-	-	143	-	-	-	-
CR(E) 10-4	3	1	•	18 3/8	8 5/8	6 7/8	32 3/4	-	-	-	183	-	-	-	-
		3	•	18 3/8	7 1/8	4 3/8	30	-	-	-	146	8 3/4	7 1/2	31 5/8	163
CR 10-5	5	1	•	19 1/2	10 5/8	7 1/2	34 3/4	-	-	-	214	-	-	-	-
		3	•	19 1/2	7 1/8	4 3/8	32 3/4	-	-	-	157	-	-	-	-
CR(E) 10-6	5	1	•	20 3/4	10 5/8	7 1/2	36 1/8	-	-	-	216	-	-	-	-
		3	•	20 3/4	7 1/8	4 3/8	34	-	-	-	159	8 3/4	7 1/2	36 1/4	201
CR 10-7	5	1	-	21 7/8	10 5/8	7 1/2	37 1/8	-	-	-	218	-	-	-	-
		3	-	21 7/8	7 1/8	4 3/8	35 1/8	-	-	-	161	-	-	-	-
CR(E) 10-8	7 1/2	1	-	23 3/8	10 1/4	7 1/2	38 3/4	-	-	-	234	-	-	-	-
		3	-	23 3/8	8 3/4	5 3/8	38 7/8	-	-	-	223	8 3/4	7 1/2	38 7/8	236
CR 10-9	7 1/2	1	-	24 5/8	10 1/4	7 1/2	39 7/8	-	-	-	236	-	-	-	-
		3	-	24 5/8	8 3/4	5 3/8	40 1/8	-	-	-	225	-	-	-	-
CR(E) 10-10	7 1/2	1	-	25 3/4	10 1/4	7 1/2	41 1/8	-	-	-	238	-	-	-	-
		3	-	25 3/4	8 3/4	5 3/8	41 1/4	-	-	-	227	8 3/4	7 1/2	41 1/4	240
CR(E) 10-12	10	1	-	28 1/8	10 1/4	10 3/8	44	-	-	-	355	-	-	-	-
		3	-	28 1/8	8 3/4	5 3/8	43 5/8	-	-	-	232	8 3/4	7 1/2	43 5/8	251
CR(E) 10-14	10	1	-	30 1/2	10 1/4	10 3/8	46 3/8	-	-	-	388	-	-	-	-
		3	-	30 1/2	8 3/4	5 3/8	46	-	-	-	238	8 3/4	7 1/2	46	256
CR 10-16	15	3	-	35 3/8	10 1/4	8 3/4	52	10 5/8	7 3/8	51 1/2	408	-	-	-	-
CR 10-17	15	3	-	37 3/4	10 1/4	8 3/4	54 3/8	10 5/8	7 3/8	53 7/8	412	-	-	-	-

All dimensions in inches unless otherwise noted.

\*Oval flanged pump B1 and B1+B2 dimension is equal to ANSI flanged pumps and weight is approximately 3 lbs. less.

• Available.

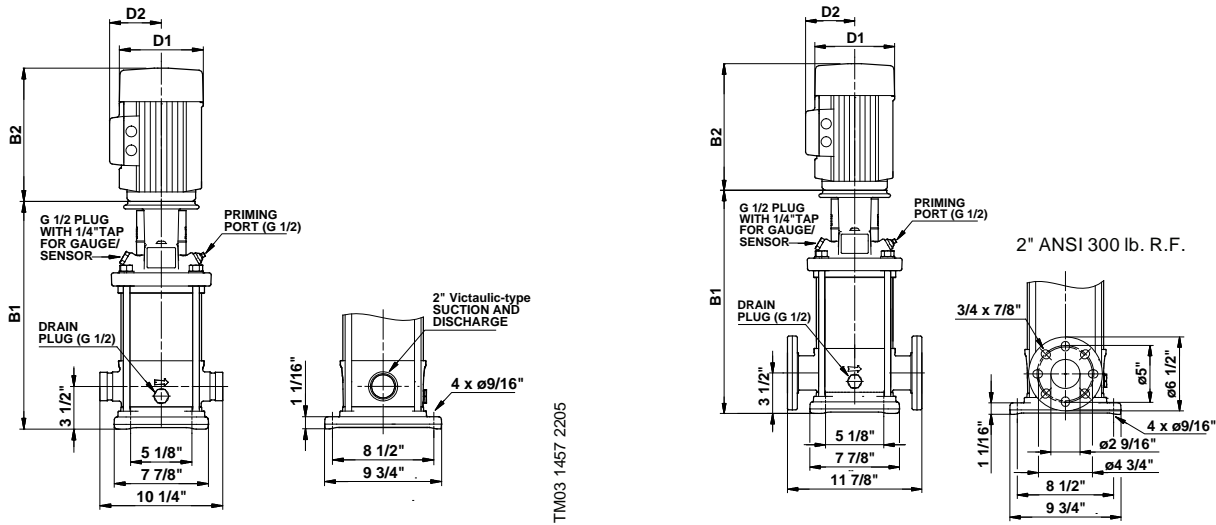


Pump type	P2 [hp]	Ph.	Oval*	ANSI dimensions [inch]						Ship Wt. [lbs.]	ANSI dimensions [inch]			Ship Wt. [lbs.]	
				B1	TEFC			ODP			MLE				
					D1	D2	B1+B2	D1	D2		B1+B2	D1	D2		B1+B2
CRI(E) 10-1	3/4	1	•	15 1/4	6 1/4	5	25 1/8	-	-	-	106	5 1/2	5 1/2	22 3/4	97
		3	•	15 1/4	5 5/8	4 5/8	22 7/8	-	-	-	97	-	-	-	-
CRI(E) 10-2	1 1/2	1	•	15 1/4	7 1/4	5 3/4	27	-	-	-	121	5 1/2	5 1/2	24 3/8	104
		3	•	15 1/4	5 5/8	4 5/8	24	-	-	-	99	7	6 5/8	26 3/4	116
CRI 10-3	3	1	•	17 1/4	8 5/8	6 7/8	31 5/8	-	-	-	176	-	-	-	-
		3	•	17 1/4	7 1/8	4 3/8	28 7/8	-	-	-	137	-	-	-	-
CRI(E) 10-4	3	1	•	18 3/8	8 5/8	6 7/8	32 3/4	-	-	-	176	-	-	-	-
		3	•	18 3/8	7 1/8	4 3/8	30	-	-	-	137	8 3/4	7 1/2	31 5/8	157
CRI 10-5	5	1	•	19 1/2	10 5/8	7 1/2	34 3/4	-	-	-	207	-	-	-	-
		3	•	19 1/2	7 1/8	4 3/8	32 3/4	-	-	-	150	-	-	-	-
CRI(E) 10-6	5	1	•	20 3/4	10 5/8	7 1/2	36 1/8	-	-	-	209	-	-	-	-
		3	•	20 3/4	7 1/8	4 3/8	34	-	-	-	152	8 3/4	7 1/2	36 1/4	194
CRI 10-7	5	1	•	21 7/8	10 5/8	7 1/2	37 1/8	-	-	-	212	-	-	-	-
		3	•	21 7/8	7 1/8	4 3/8	35 1/8	-	-	-	154	-	-	-	-
CRI(E) 10-8	7 1/2	1	•	23 3/8	10 1/4	7 1/2	38 3/4	-	-	-	229	-	-	-	-
		3	•	23 3/8	8 3/4	5 3/8	38 7/8	-	-	-	216	8 3/4	7 1/2	38 7/8	229
CRI 10-9	7 1/2	1	•	24 5/8	10 1/4	7 1/2	39 7/8	-	-	-	232	-	-	-	-
		3	•	24 5/8	8 3/4	5 3/8	40 1/8	-	-	-	218	-	-	-	-
CRI(E) 10-10	7 1/2	1	•	25 3/4	10 1/4	7 1/2	41 1/8	-	-	-	234	-	-	-	-
		3	•	25 3/4	8 3/4	5 3/8	41 1/4	-	-	-	221	8 3/4	7 1/2	41 1/4	234
CRI(E) 10-12	10	1	-	28 1/8	10 1/4	10 3/8	44	-	-	-	346	-	-	-	-
		3	-	28 1/8	8 3/4	5 3/8	43 5/8	-	-	-	225	8 3/4	7 1/2	43 5/8	243
CRI(E) 10-14	10	1	-	30 1/2	10 1/4	10 3/8	46 3/8	-	-	-	379	-	-	-	-
		3	-	30 1/2	8 3/4	5 3/8	46	-	-	-	229	8 3/4	7 1/2	46	247
CRI 10-16	15	3	-	35 3/8	10 1/4	8 3/4	52	10 5/8	7 3/8	51 1/2	399	-	-	-	-
CRI 10-17	15	3	-	37 3/4	10 1/4	8 3/4	54 3/8	10 5/8	7 3/8	53 7/8	404	-	-	-	-

All dimensions in inches unless otherwise noted.

\*Oval flanged pump B1 and B1+B2 dimension is equal to ANSI flanged pumps and weight is approximately 7 lbs. less.

• Available.



Pump type	P2 [hp]	Ph.	PJE*	ANSI dimensions [inch]						Ship Wt. [lbs.]	ANSI dimensions [inch]			Ship Wt. [lbs.]	
				B1	TEFC			ODP			MLE				
					D1	D2	B1+B2	D1	D2		B1+B2	D1	D2		B1+B2
CRN(E) 10-1	3/4	1	•	15 1/4	6 1/4	5	25 1/8	-	-	-	106	5 1/2	5 1/2	22 3/4	97
		3	•	15 1/4	5 5/8	4 5/8	22 7/8	-	-	-	97	-	-	-	-
CRN(E) 10-2	1 1/2	1	•	15 1/4	7 1/4	5 3/4	27	-	-	-	121	5 1/2	5 1/2	24 3/8	104
		3	•	15 1/4	5 5/8	4 5/8	24	-	-	-	99	7	6 5/8	26 3/4	116
CRN 10-3	3	1	•	17 1/4	8 5/8	6 7/8	31 5/8	-	-	-	176	-	-	-	-
		3	•	17 1/4	7 1/8	4 3/8	28 7/8	-	-	-	137	-	-	-	-
CRN(E) 10-4	3	1	•	18 3/8	8 5/8	6 7/8	32 3/4	-	-	-	176	-	-	-	-
		3	•	18 3/8	7 1/8	4 3/8	30	-	-	-	139	8 3/4	7 1/2	31 5/8	157
CRN 10-5	5	1	•	19 1/2	10 5/8	7 1/2	34 3/4	-	-	-	207	-	-	-	-
		3	•	19 1/2	7 1/8	4 3/8	32 3/4	-	-	-	150	-	-	-	-
CRN(E) 10-6	5	1	•	20 3/4	10 5/8	7 1/2	36 1/8	-	-	-	209	-	-	-	-
		3	•	20 3/4	7 1/8	4 3/8	34	-	-	-	152	8 3/4	7 1/2	36 1/4	194
CRN 10-7	5	1	•	21 7/8	10 5/8	7 1/2	37 1/8	-	-	-	212	-	-	-	-
		3	•	21 7/8	7 1/8	4 3/8	35 1/8	-	-	-	154	-	-	-	-
CRN(E) 10-8	7 1/2	1	•	23 3/8	10 1/4	7 1/2	38 3/4	-	-	-	229	-	-	-	-
		3	•	23 3/8	8 3/4	5 3/8	38 7/8	-	-	-	216	8 3/4	7 1/2	38 7/8	229
CRN 10-9	7 1/2	1	•	24 5/8	10 1/4	7 1/2	39 7/8	-	-	-	232	-	-	-	-
		3	•	24 5/8	8 3/4	5 3/8	40 1/8	-	-	-	218	-	-	-	-
CRN(E) 10-10	7 1/2	1	•	25 3/4	10 1/4	7 1/2	41 1/8	-	-	-	234	-	-	-	-
		3	•	25 3/4	8 3/4	5 3/8	41 1/4	-	-	-	221	8 3/4	7 1/2	41 1/4	234
CRN(E) 10-12	10	1	•	28 1/8	10 1/4	10 3/8	44	-	-	-	346	-	-	-	-
		3	•	28 1/8	8 3/4	5 3/8	43 5/8	-	-	-	225	8 3/4	7 1/2	43 5/8	243
CRN(E) 10-14	10	1	•	30 1/2	10 1/4	10 3/8	46 3/8	-	-	-	379	-	-	-	-
		3	•	30 1/2	8 3/4	5 3/8	46	-	-	-	229	8 3/4	7 1/2	46	247
CRN 10-16	15	3	•	35 3/8	10 1/4	8 3/4	52	10 5/8	7 3/8	51 1/2	399	-	-	-	-
CRN 10-17	15	3	•	37 3/4	10 1/4	8 3/4	54 3/8	10 5/8	7 3/8	53 7/8	404	-	-	-	-

All dimensions in inches unless otherwise noted.

\*PJE flanged pump B1 and B1+B2 dimension is equal to ANSI flanged pumps and weight is approximately 9 lbs. less.

• Available