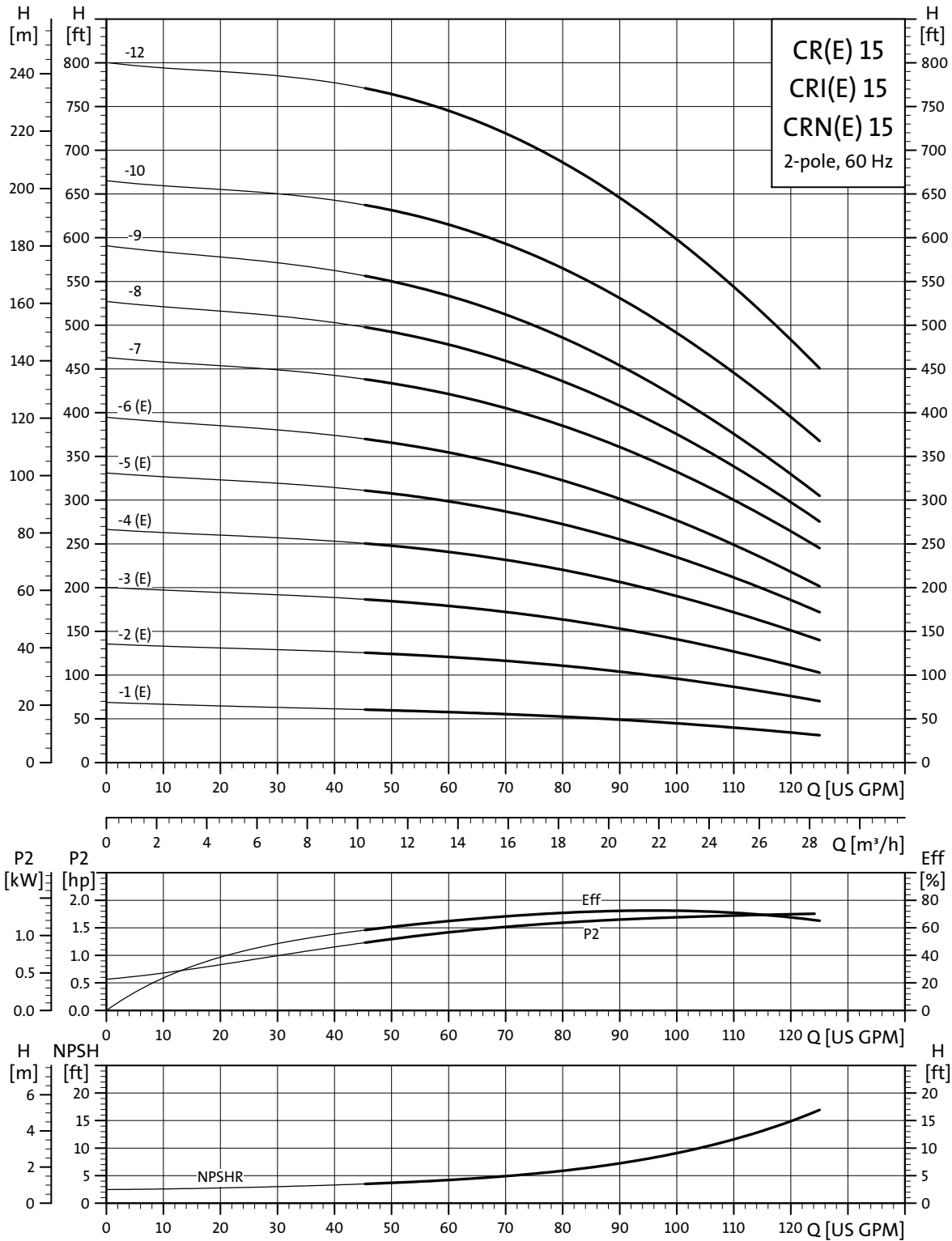
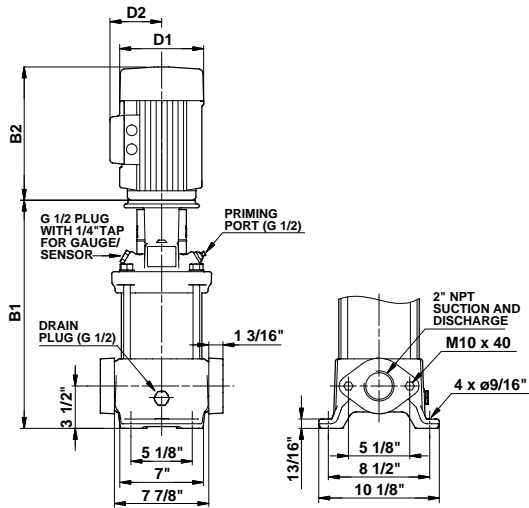


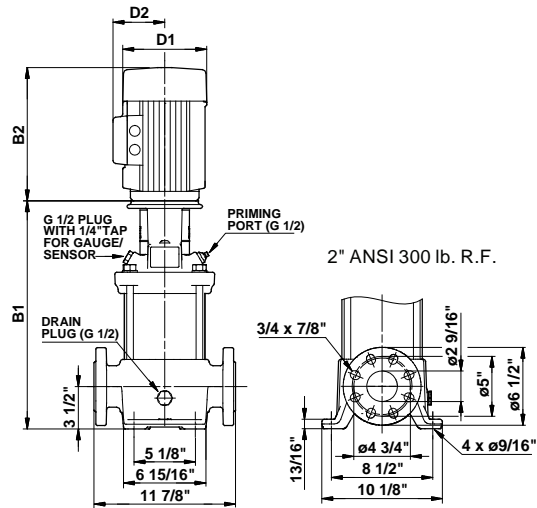
CR(E), CRI(E), CRN(E) 15



TM02 7222 2803



TM03 1460 2205



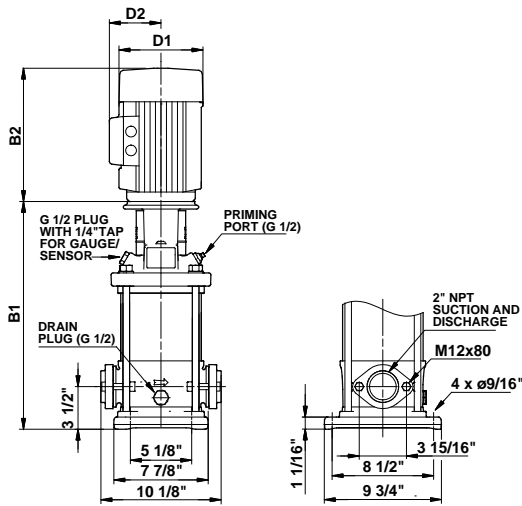
TM03 1461 2205

Pump type	P2 [hp]	Ph.	Oval*	ANSI dimensions [inch]						Ship Wt. [lbs.]	ANSI dimensions [inch]			Ship Wt. [lbs.]	
				B1	TEFC			ODP			MLE				
					D1	D2	B1+B2	D1	D2		B1+B2	D1	D2		B1+B2
CR(E) 15-1	2	1	•	16 1/2	7 1/4	5 3/4	29	-	-	-	-	-	-	-	
		3	•	16 1/2	7 1/8	4 3/8	27 7/8	-	-	-	7	6 5/8	29 3/8	141	
CR(E) 15-2	5	1	•	17 1/4	10 5/8	7 1/2	32 1/2	-	-	-	-	-	-	-	
		3	•	17 1/4	7 1/8	4 3/8	30 3/8	-	-	-	8 3/4	7 1/2	32 3/4	194	
CR(E) 15-3	5	1	•	19	10 5/8	7 1/2	34 1/4	-	-	-	-	-	-	-	
		3	•	19	7 1/8	4 3/8	32 1/4	-	-	-	8 3/4	7 1/2	34 1/2	196	
CR(E) 15-4	7 1/2	1	•	21	10 1/4	7 1/2	36 3/8	-	-	-	-	-	-	-	
		3	•	21	8 3/4	5 3/8	36 1/2	-	-	-	8 3/4	7 1/2	36 1/2	227	
CR(E) 15-5	10	1	•	22 7/8	10 1/4	10 3/8	38 3/4	-	-	-	-	-	-	-	
		3	•	22 7/8	8 3/4	5 3/8	38 3/8	-	-	-	8 3/4	7 1/2	38 3/8	238	
CR(E) 15-6	10	1	-	24 5/8	10 1/4	10 3/8	40 1/2	-	-	-	-	-	-	-	
		3	-	24 5/8	8 3/4	5 3/8	40 1/8	-	-	-	8 3/4	7 1/2	40 1/8	240	
CR 15-7	15	3	-	28 7/8	10 1/4	8 3/4	45 1/2	10 5/8	7 3/8	45	364	-	-	-	
CR 15-8	15	3	-	30 5/8	10 1/4	8 3/4	47 3/8	10 5/8	7 3/8	46 7/8	395	-	-	-	
CR 15-9	15	3	-	32 3/8	10 1/4	8 3/4	48 7/8	10 5/8	7 3/8	48 5/8	401	-	-	-	
CR 15-10	20	3	-	34 1/4	10 1/4	8 3/4	50 5/8	11 1/2	9	53 3/4	417	-	-	-	
CR 15-12	25	3	-	37 1/8	13	11 1/2	56 3/4	11 1/2	9	57 1/2	512	-	-	-	

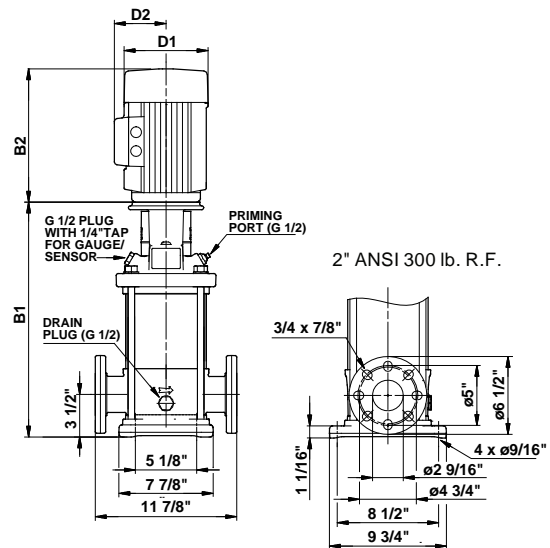
All dimensions in inches unless otherwise noted.

*Oval flanged pump B1 and B1+B2 dimension is equal to ANSI flanged pumps and weight is approximately 3 lbs. less.

• Available.



TM03 1458 2205



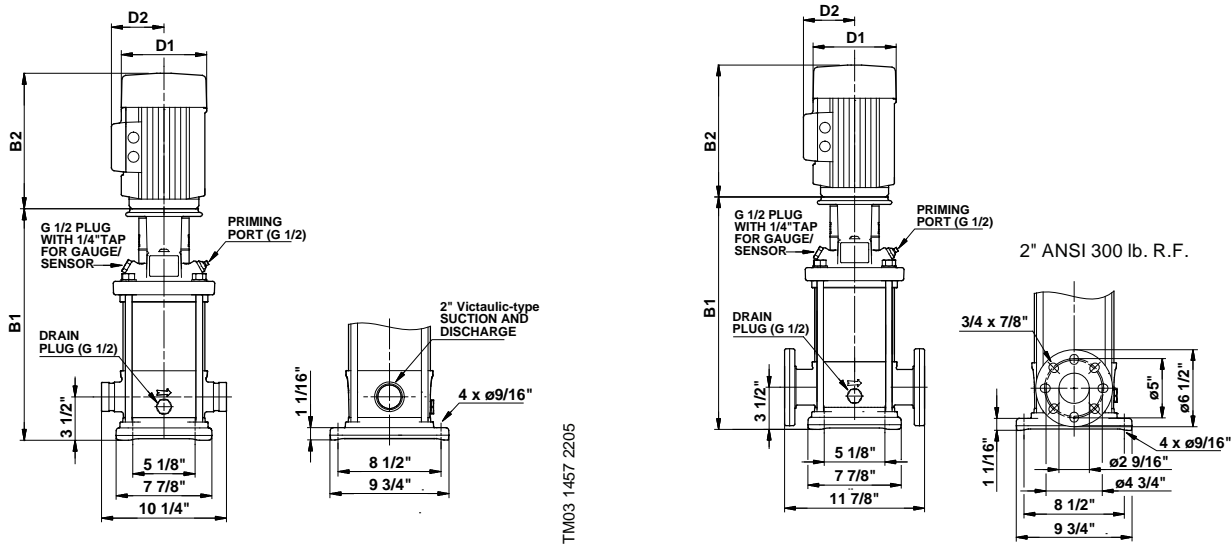
TM03 1459 2205

Pump type	P2 [hp]	Ph.	Oval*	ANSI dimensions [inch]									ANSI dimensions [inch]			
				B1	TEFC			ODP			Ship Wt. [lbs.]	MLE			Ship Wt. [lbs.]	
					D1	D2	B1+B2	D1	D2	B1+B2		D1	D2	B1+B2		
CRI(E) 15-1	2	1	•	16 1/2	7 1/4	5 3/4	29	-	-	-	130	-	-	-	-	
		3	•	16 1/2	7 1/8	4 3/8	27 7/8	-	-	-	121	7	6 5/8	29 3/8	135	
CRI(E) 15-2	5	1	•	17 1/4	10 5/8	7 1/2	32 1/2	-	-	-	203	-	-	-	-	
		3	•	17 1/4	7 1/8	4 3/8	30 3/8	-	-	-	146	8 3/4	7 1/2	32 3/4	185	
CRI(E) 15-3	5	1	•	19	10 5/8	7 1/2	34 1/4	-	-	-	205	-	-	-	-	
		3	•	19	7 1/8	4 3/8	32 1/4	-	-	-	148	8 3/4	7 1/2	34 1/2	190	
CRI(E) 15-4	7 1/2	1	•	21	10 1/4	7 1/2	36 3/8	-	-	-	218	-	-	-	-	
		3	•	21	8 3/4	5 3/8	36 1/2	-	-	-	207	8 3/4	7 1/2	36 1/2	221	
CRI(E) 15-5	10	1	•	22 7/8	10 1/4	10 3/8	38 3/4	-	-	-	335	-	-	-	-	
		3	•	22 7/8	8 3/4	5 3/8	38 3/8	-	-	-	214	8 3/4	7 1/2	38 3/8	232	
CRI(E) 15-6	10	1	•	24 5/8	10 1/4	10 3/8	40 1/2	-	-	-	340	-	-	-	-	
		3	•	24 5/8	8 3/4	5 3/8	40 1/8	-	-	-	216	8 3/4	7 1/2	40 1/8	236	
CRI 15-7	15	3	•	28 7/8	10 1/4	8 3/4	45 1/2	10 5/8	7 3/8	45	357	-	-	-	-	
CRI 15-8	15	3	•	30 5/8	10 1/4	8 3/4	47 3/8	10 5/8	7 3/8	46 7/8	388	-	-	-	-	
CRI 15-9	15	3	-	32 3/8	10 1/4	8 3/4	48 7/8	10 5/8	7 3/8	48 5/8	392	-	-	-	-	
CRI 15-10	20	3	-	34 1/4	10 1/4	8 3/4	50 5/8	11 1/2	9	53 3/4	408	-	-	-	-	
CRI 15-12	25	3	-	37 1/8	13	11 1/2	56 3/4	11 1/2	9	57 1/2	505	-	-	-	-	

All dimensions in inches unless otherwise noted.

*Oval flanged pump B1 and B1+B2 dimension is equal to ANSI flanged pumps and weight is approximately 7 lbs. less.

• Available.



Pump type	P2 [hp]	Ph.	PJE*	ANSI dimensions [inch]						Ship Wt. [lbs.]	ANSI dimensions [inch]			Ship Wt. [lbs.]	
				B1	TEFC			ODP			MLE				
					D1	D2	B1+B2	D1	D2		B1+B2	D1	D2		B1+B2
CRN(E) 15-1	2	1	•	16 1/2	7 1/4	5 3/4	29	-	-	-	-	-	-	-	
		3	•	16 1/2	7 1/8	4 3/8	27 7/8	-	-	-	7	6 5/8	29 3/8	135	
CRN(E) 15-2	5	1	•	17 1/4	10 5/8	7 1/2	32 1/2	-	-	-	-	-	-	-	
		3	•	17 1/4	7 1/8	4 3/8	30 3/8	-	-	-	8 3/4	7 1/2	32 3/4	185	
CRN(E) 15-3	5	1	•	19	10 5/8	7 1/2	34 1/4	-	-	-	-	-	-	-	
		3	•	19	7 1/8	4 3/8	32 1/4	-	-	-	8 3/4	7 1/2	34 1/2	190	
CRN(E) 15-4	7 1/2	1	•	21	10 1/4	7 1/2	36 3/8	-	-	-	-	-	-	-	
		3	•	21	8 3/4	5 3/8	36 1/2	-	-	-	8 3/4	7 1/2	36 1/2	221	
CRN(E) 15-5	10	1	•	22 7/8	10 1/4	10 3/8	38 3/4	-	-	-	-	-	-	-	
		3	•	22 7/8	8 3/4	5 3/8	38 3/8	-	-	-	8 3/4	7 1/2	38 3/8	232	
CRN(E) 15-6	10	1	•	24 5/8	10 1/4	10 3/8	40 1/2	-	-	-	-	-	-	-	
		3	•	24 5/8	8 3/4	5 3/8	40 1/8	-	-	-	8 3/4	7 1/2	40 1/8	236	
CRN 15-7	15	3	•	28 7/8	10 1/4	8 3/4	45 1/2	10 5/8	7 3/8	45	357	-	-	-	
CRN 15-8	15	3	•	30 5/8	10 1/4	8 3/4	47 3/8	10 5/8	7 3/8	46 7/8	388	-	-	-	
CRN 15-9	15	3	•	32 3/8	10 1/4	8 3/4	48 7/8	10 5/8	7 3/8	48 5/8	392	-	-	-	
CRN 15-10	20	3	•	34 1/4	10 1/4	8 3/4	50 5/8	11 1/2	9	53 3/4	408	-	-	-	
CRN 15-12	25	3	•	37 1/8	13	11 1/2	56 3/4	11 1/2	9	57 1/2	505	-	-	-	

All dimensions in inches unless otherwise noted.

*PJE flanged pump B1 and B1+B2 dimension is equal to ANSI flanged pump and weight is approximately 9 lbs. less.

• Available.