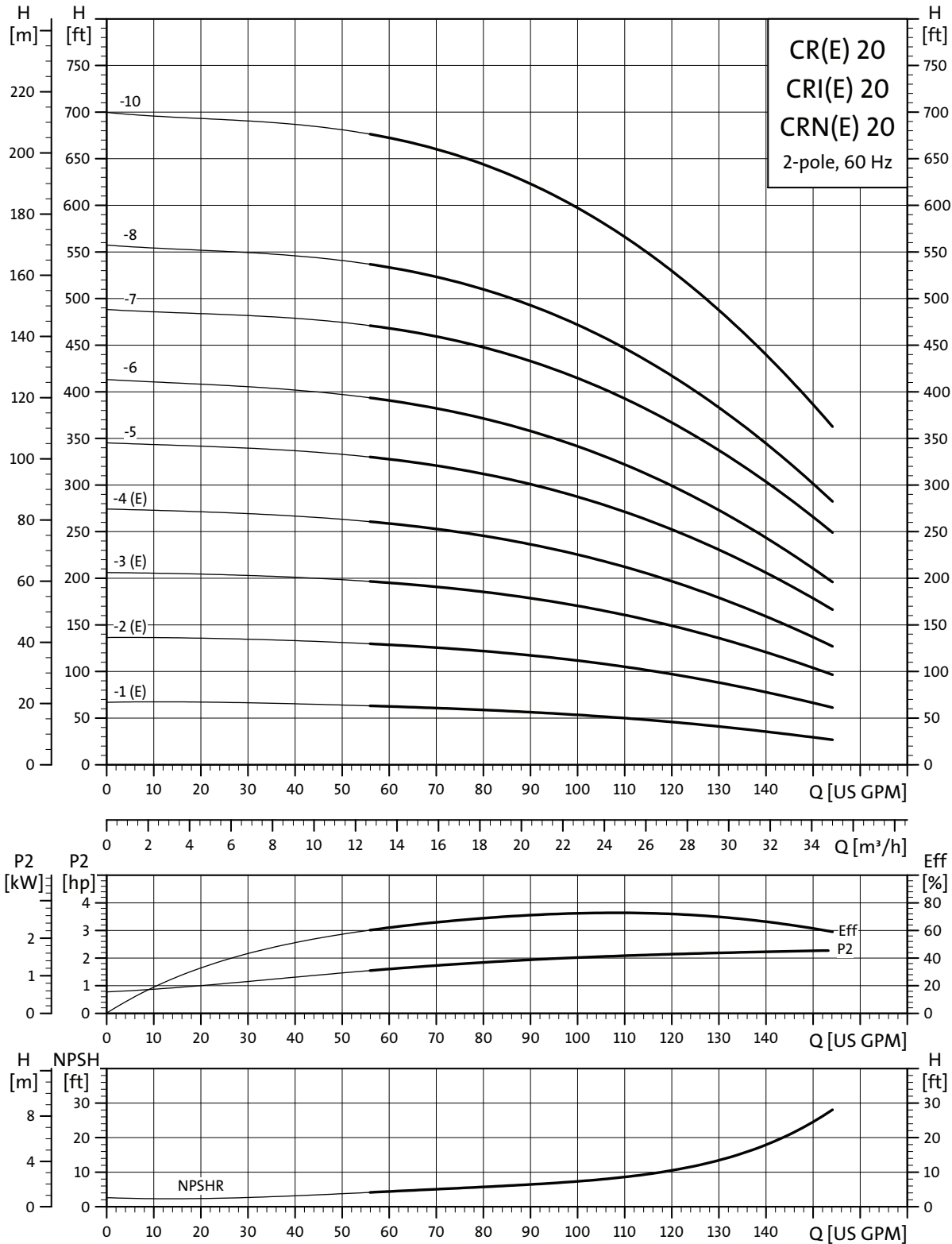
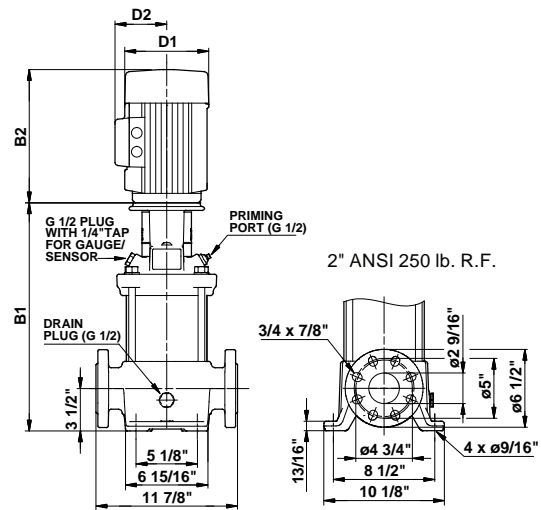
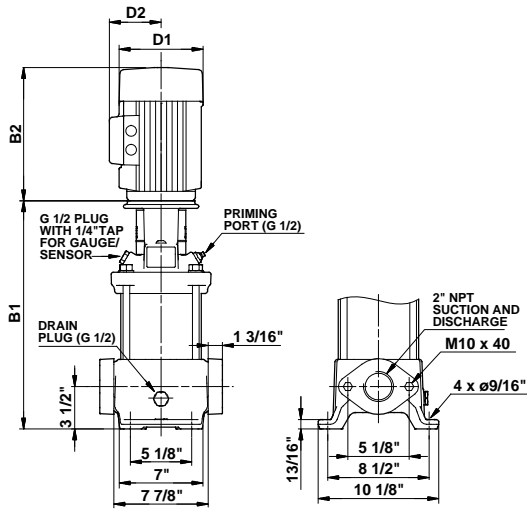


CR(E), CRI(E), CRN(E) 20



TM02 7223 2803

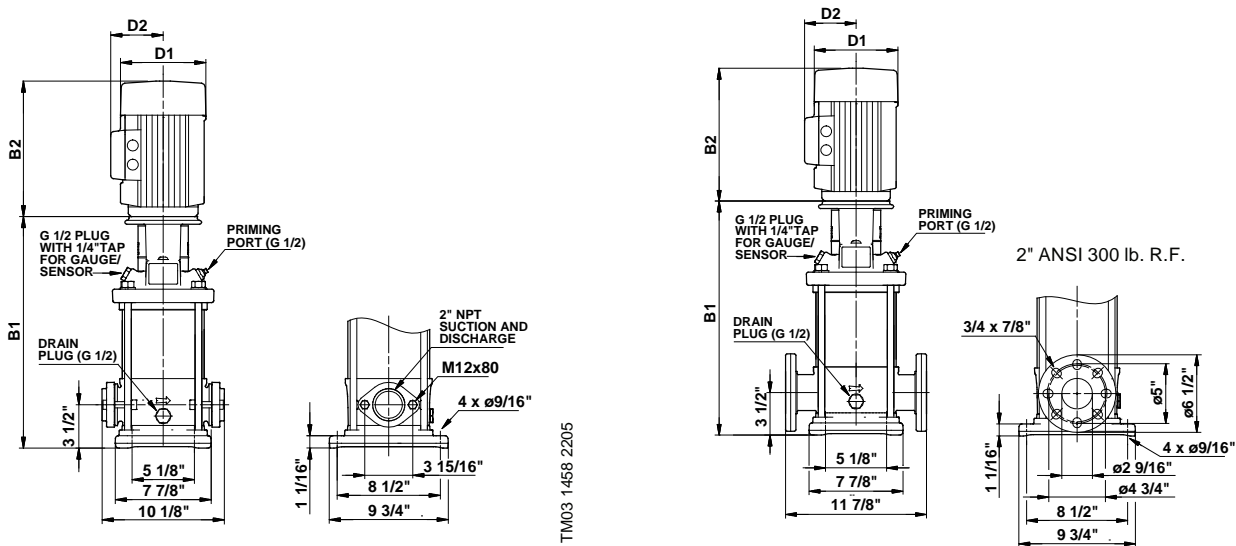


Pump type	P2 [hp]	Ph.	Dimensions [inch]									Dimensions [inch]			
			Oval*	B1	TEFC			ODP			Ship Wt. [lbs.]	MLE			Ship Wt. [lbs.]
					D1	D2	B1+B2	D1	D2	B1+B2		D1	D2	B1+B2	
CR(E) 20-1	3	1	•	17 1/4	8 5/8	6 7/8	31 5/8	-	-	-	181	-	-	-	-
			•	17 1/4	7 1/8	4 3/8	28 7/8	-	-	-	141	8 3/4	7 1/2	30 5/8	161
CR(E) 20-2	5	1	•	17 1/4	10 5/8	7 1/2	32 1/2	-	-	-	209	-	-	-	-
			•	17 1/4	7 1/8	4 3/8	30 3/8	-	-	-	152	8 3/4	7 1/2	32 3/4	194
CR(E) 20-3	7 1/2	1	•	19 1/4	10 1/4	7 1/2	34 5/8	-	-	-	223	-	-	-	-
			•	19 1/4	8 3/4	5 3/8	34 3/4	-	-	-	209	8 3/4	7 1/2	34 7/8	223
CR(E) 20-4	10	1	•	21	10 1/4	10 3/8	37	-	-	-	337	-	-	-	-
			•	21	8 3/4	5 3/8	36 1/2	-	-	-	214	8 3/4	7 1/2	36 5/8	232
CR 20-5	15	3	•	25 3/8	10 1/4	8 3/4	42	10 5/8	7 3/8	41 1/2	355	-	-	-	-
CR 20-6	15	3	•	27 1/8	10 1/4	8 3/4	43 3/4	10 5/8	7 3/8	43 1/4	359	-	-	-	-
CR 20-7	20	3	•	28 7/8	10 1/4	8 3/4	45 1/4	10 5/8	7 3/8	48 3/8	404	-	-	-	-
CR 20-8	20	3	-	30 5/8	10 1/4	8 3/4	47	11 1/2	9	50 1/2	408	-	-	-	-
CR 20-10	25	3	-	33 1/2	13	11 1/2	53 1/8	11 1/2	9	53 7/8	505	-	-	-	-

All dimensions in inches unless otherwise noted.

*Oval flanged pump B1 and B1+B2 dimension is equal to ANSI flanged pumps and weight is approximately 3 lbs. less.

• Available.



TM03 1458 2205

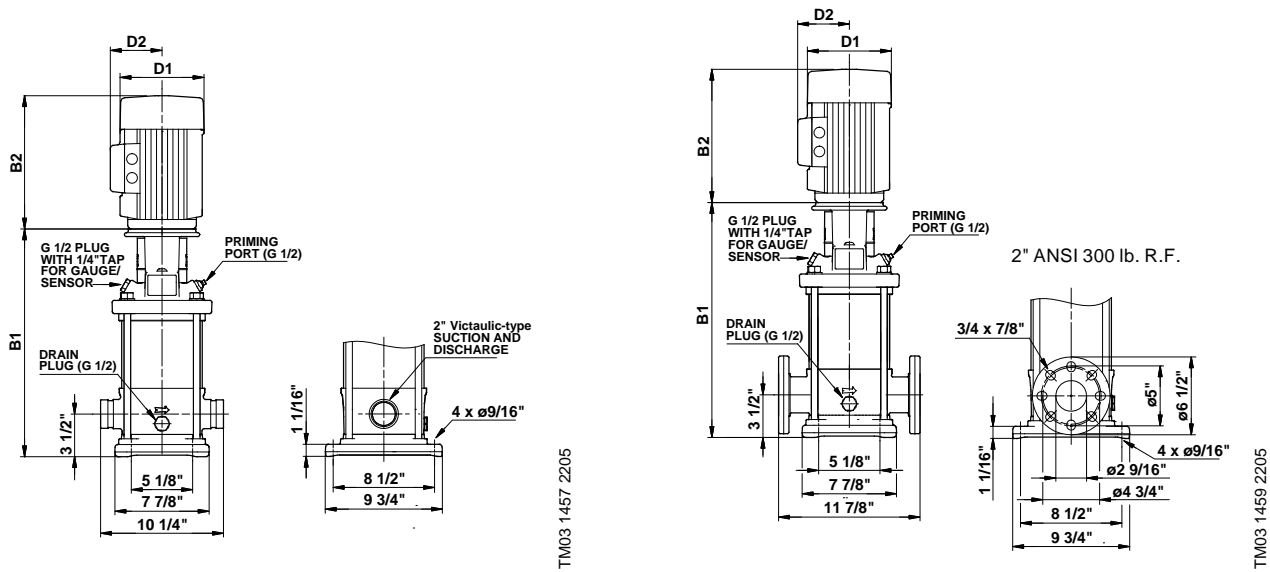
TM03 1459 2205

Pump type	P2 [hp]	Ph.	ANSI dimensions [inch]									Ship Wt. [lbs.]	ANSI dimensions [inch]			Ship Wt. [lbs.]
			Oval*	B1	TEFC			ODP			MLE					
					D1	D2	B1+B2	D1	D2	B1+B2	D1		D2	B1+B2		
CRI(E) 20-1	3	1	•	17 1/4	8 5/8	6 7/8	31 5/8	-	-	-	-	-	-	-	-	
		3	•	17 1/4	7 1/8	4 3/8	28 7/8	-	-	-	8 3/4	7 1/2	30 1/2	154		
CRI(E) 20-2	5	1	•	17 1/4	10 5/8	7 1/2	32 1/2	-	-	-	-	-	-	-		
		3	•	17 1/4	7 1/8	4 3/8	30 3/8	-	-	-	8 3/4	7 1/2	32 3/4	185		
CRI(E) 20-3	7 1/2	1	•	19 1/4	10 1/4	7 1/2	34 5/8	-	-	-	-	-	-	-		
		3	•	19 1/4	8 3/4	5 3/8	34 3/4	-	-	-	8 3/4	7 1/2	34 3/4	216		
CRI(E) 20-4	10	1	•	21	10 1/4	10 3/8	37	-	-	-	-	-	-	-		
		3	•	21	8 3/4	5 3/8	36 1/2	-	-	-	8 3/4	7 1/2	36 1/2	225		
CRI 20-5	15	3	•	25 3/8	10 1/4	8 3/4	42	10 5/8	7 3/8	41 1/2	351	-	-	-		
CRI 20-6	15	3	•	27 1/8	10 1/4	8 3/4	43 3/4	10 5/8	7 3/8	43 1/4	353	-	-	-		
CRI 20-7	20	3	•	28 7/8	10 1/4	8 3/4	45 1/4	10 5/8	7 3/8	48 3/8	397	-	-	-		
CRI 20-8	20	3	-	30 5/8	10 1/4	8 3/4	47	11 1/2	9	50 1/2	401	-	-	-		
CRI 20-10	25	3	-	33 1/2	13	11 1/2	53 1/8	11 1/2	9	53 7/8	498	-	-	-		

All dimensions in inches unless otherwise noted.

*Oval flanged pump B1 and B1+B2 dimension is equal to ANSI flanged pumps and weight is approximately 7 lbs. less.

• Available.



Pump type	P2 [hp]	Ph.	Dimensions [inch]									Ship Wt. [lbs.]	Dimensions [inch]			Ship Wt. [lbs.]
			PJE*	B1	TEFC			ODP			MLE					
					D1	D2	B1+B2	D1	D2	B1+B2	D1		D2	B1+B2		
CRN(E) 20-1	3	1	•	17 1/4	8 5/8	6 7/8	31 5/8	-	-	-	-	-	-	-	-	
		3	•	17 1/4	7 1/8	4 3/8	28 7/8	-	-	-	8 3/4	7 1/2	30 1/2	154		
CRN(E) 20-2	5	1	•	17 1/4	10 5/8	7 1/2	32 1/2	-	-	-	-	-	-	-		
		3	•	17 1/4	7 1/8	4 3/8	30 3/8	-	-	-	8 3/4	7 1/2	32 3/4	185		
CRN(E) 20-3	7 1/2	1	•	19 1/4	10 1/4	7 1/2	34 5/8	-	-	-	-	-	-	-		
		3	•	19 1/4	8 3/4	5 3/8	34 3/4	-	-	-	8 3/4	7 1/2	34 3/4	216		
CRN(E) 20-4	10	1	•	21	10 1/4	10 3/8	37	-	-	-	-	-	-	-		
		3	•	21	8 3/4	5 3/8	36 1/2	-	-	-	8 3/4	7 1/2	36 1/2	225		
CRN 20-5	15	3	•	25 3/8	10 1/4	8 3/4	42	10 5/8	7 3/8	41 1/2	351	-	-	-		
CRN 20-6	15	3	•	27 1/8	10 1/4	8 3/4	43 3/4	10 5/8	7 3/8	43 1/4	353	-	-	-		
CRN 20-7	20	3	•	28 7/8	10 1/4	8 3/4	45 1/4	10 5/8	7 3/8	48 3/8	397	-	-	-		
CRN 20-8	20	3	•	30 5/8	10 1/4	8 3/4	47	11 1/2	9	50 1/2	401	-	-	-		
CRN 20-10	25	3	•	33 1/2	13	11 1/2	53 1/8	11 1/2	9	53 7/8	498	-	-	-		

All dimensions in inches unless otherwise noted.

*PJE flanged pump B1 and B1+B2 dimension is equal to ANSI flanged pumps and weight is approximately 9 lbs. less.

• Available.