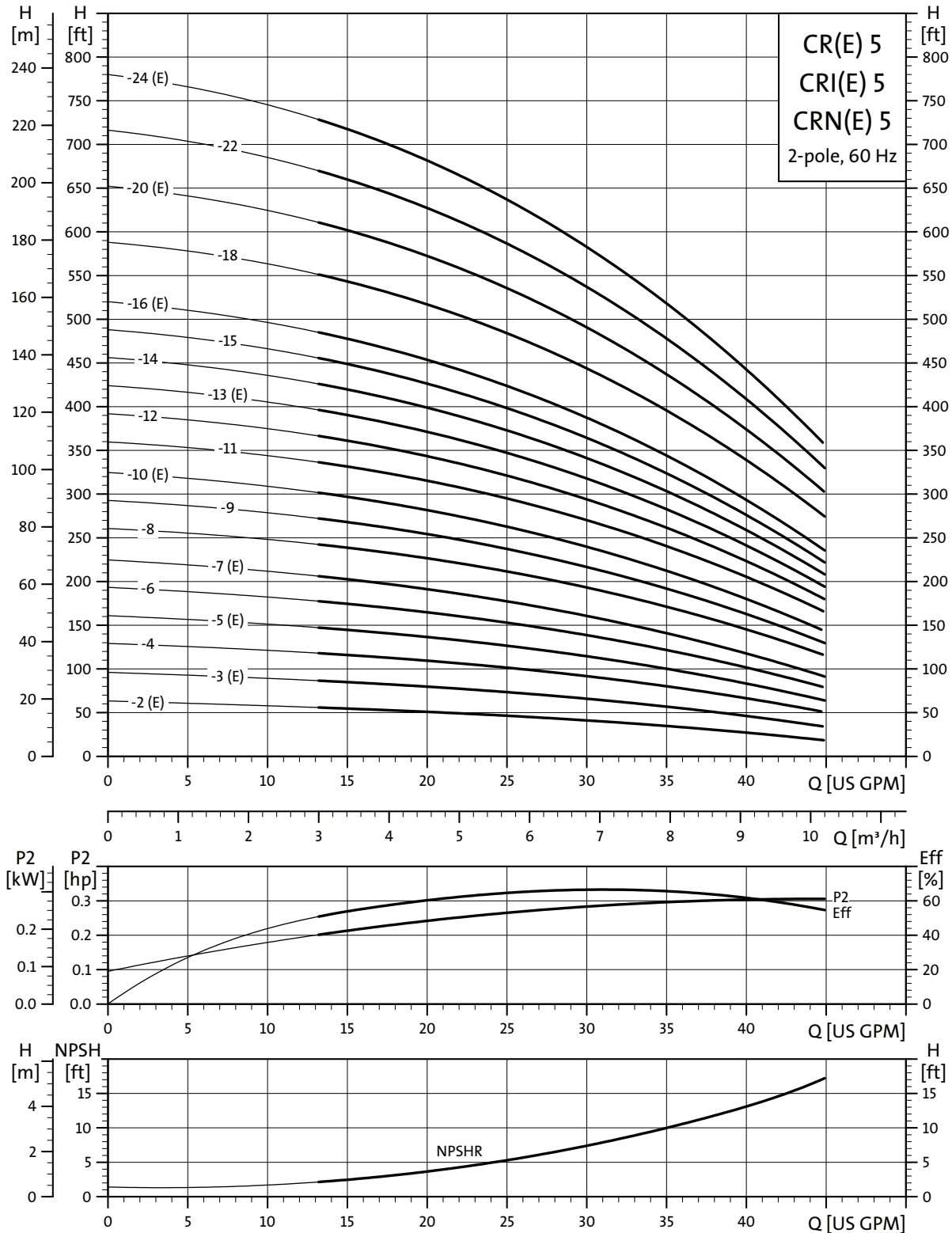
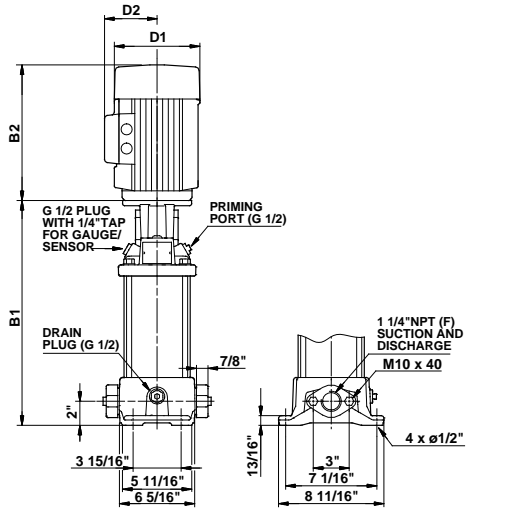


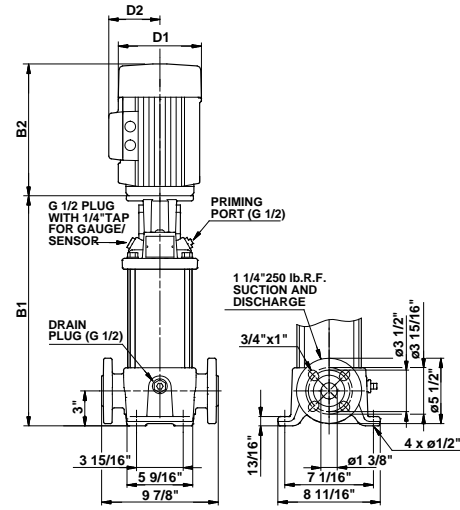
CR(E), CRI(E), CRN(E) 5



TM02 4085 1303



TM03 1455 2205



TM03 1451 2205

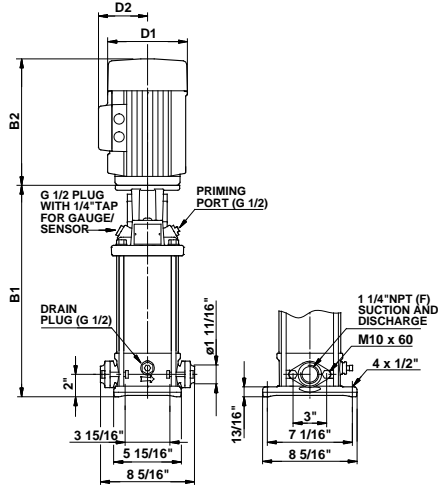
Pump type	P2 [hp]	Ph.	Oval*	ANSI dimensions [inch]				Ship Wt. [lbs.]
				B1	TEFC			
					D1	D2	B1+B2	
CR(E) 5-2	3/4	1 3	•	12	6 1/4	5	22	77
CR(E) 5-3	1	1 3	•	13 1/8	7 1/4	5 3/4	24 1/4	90
CR 5-4	1 1/2	1 3	•	14 1/8	7 1/4	5 3/4	25 7/8	94
CR(E) 5-5	1 1/2	1 3	•	15 1/4	7 1/4	5 3/4	26 7/8	95
CR 5-6	2	1 3	•	16 1/4	7 1/4	5 3/4	28 7/8	108
CR(E) 5-7	2	1 3	•	17 3/8	7 1/4	5 3/4	30	109
CR 5-8	3	1 3	•	19 1/2	8 5/8	6 7/8	33 7/8	145
CR 5-9	3	1 3	•	20 5/8	8 5/8	6 7/8	35	147
CR(E) 5-10	3	1 3	•	21 5/8	8 5/8	6 7/8	36	148
CR 5-11	5	1 3	•	22 3/4	10 5/8	7 1/2	38	177
CR 5-12	5	1 3	•	23 3/4	10 5/8	7 1/2	39 1/8	182
CR(E) 5-13	5	1 3	•	24 7/8	10 5/8	7 1/2	40 1/8	183
CR 5-14	5	1 3	•	25 7/8	10 5/8	7 1/2	41 1/4	185
CR 5-15	5	1 3	•	27	10 5/8	7 1/2	42 1/4	186
CR(E) 5-16	5	1 3	•	28	10 5/8	7 1/2	43 3/8	187
CR 5-18	7 1/2	1 3	-	30 5/8	10 1/4	7 1/2	46	200
CR(E) 5-20	7 1/2	1 3	-	32 3/4	10 1/4	7 1/2	48 1/8	203
CR 5-22	7 1/2	1 3	-	34 7/8	10 1/4	7 1/2	50 1/4	300
CR(E) 5-24	7 1/2	1 3	-	37	10 1/4	7 1/2	52 3/8	302

Pump type	ANSI dimensions [inch]			Ship Wt. [lbs.]
	MLE			
	D1	D2	B1+B2	
CR(E) 5-2	5 1/2	5 1/2	19 1/2	71
CR(E) 5-3	5 1/2	5 1/2	22 1/4	75
CR 5-4	7	6 5/8	26	88
CR(E) 5-5	5 1/2	5 1/2	24 1/4	81
CR 5-6	7	6 5/8	28 1/8	94
CR(E) 5-7	7	6 5/8	30 1/4	113
CR 5-10	8 3/4	7 1/2	35	127
CR(E) 5-13	8 3/4	7 1/2	40 3/8	166
CR(E) 5-16	8 3/4	7 1/2	43 1/2	170
CR(E) 5-20	8 3/4	7 1/2	48 1/4	204
CR(E) 5-24	8 3/4	7 1/2	52 1/2	303

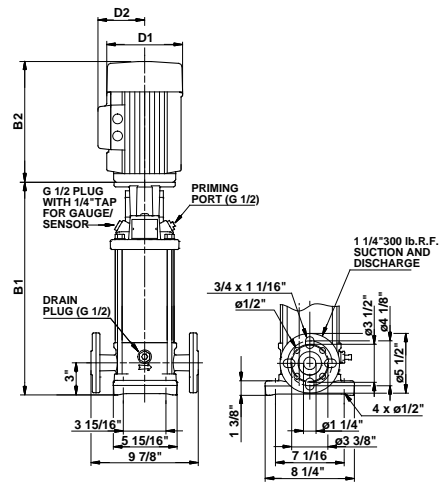
All dimensions in inches unless otherwise noted.

*Oval flanged pump B1 and B1+B2 dimension is one inch less than ANSI flanged pumps and weight is approximately 9 lbs. less.

• Available.



TM03 1456 2205



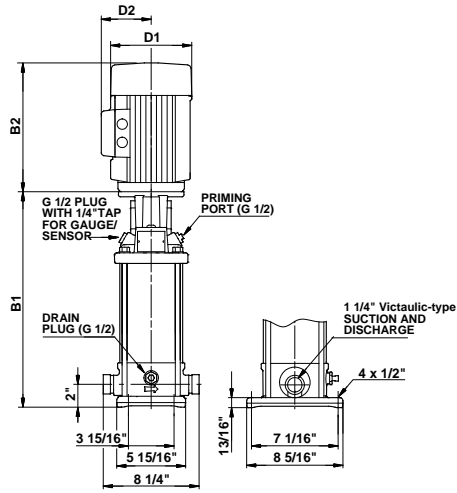
TM03 1453 2205

Pump type	P2 [hp]	Ph.	Oval*	ANSI dimensions [inch]				Ship Wt. [lbs.]	ANSI dimensions [inch]			Ship Wt. [lbs.]
				B1	TEFC				MLE			
					D1	D2	B1+B2		D1	D2	B1+B2	
CRI(E) 5-2	3/4	1	•	12 1/8	6 1/4	5	22 1/8	71	5 1/2	5 1/2	19 5/8	66
		3	•	12 1/8	5 5/8	4 5/8	19 3/4	62	-	-	-	-
CRI(E) 5-3	1	1	•	13 1/4	7 1/4	5 3/4	24 3/8	85	5 1/2	5 1/2	22 3/8	70
		3	•	13 1/4	5 5/8	4 5/8	20 3/4	64	7	6 5/8	26 1/8	83
CRI 5-4	1 1/2	1	•	14 1/4	7 1/4	5 3/4	26	89	-	-	-	-
		3	•	14 1/4	5 5/8	4 5/8	23	66	-	-	-	-
CRI(E) 5-5	1 1/2	1	•	15 3/8	7 1/4	5 3/4	27	90	5 1/2	5 1/2	24 3/8	75
		3	•	15 3/8	5 5/8	4 5/8	24 1/8	67	7	6 5/8	28 1/4	88
CRI 5-6	2	1	•	16 3/8	7 1/4	5 3/4	29	103	-	-	-	-
		3	•	16 3/8	7 1/8	4 3/8	27 3/4	90	-	-	-	-
CRI(E) 5-7	2	1	•	17 1/2	7 1/4	5 3/4	30	104	-	-	-	-
		3	•	17 1/2	7 1/8	4 3/8	28 7/8	95	7	6 5/8	30 3/8	107
CRI 5-8	3	1	•	19 5/8	8 5/8	6 7/8	34	138	-	-	-	-
		3	•	19 5/8	7 1/8	4 3/8	31 1/4	99	-	-	-	-
CRI 5-9	3	1	•	20 3/4	8 5/8	6 7/8	35 1/8	140	-	-	-	-
		3	•	20 3/4	7 1/8	4 3/8	32 3/8	101	-	-	-	-
CRI(E) 5-10	3	1	•	21 3/4	8 5/8	6 7/8	36 1/8	141	-	-	-	-
		3	•	21 3/4	7 1/8	4 3/8	33 3/8	102	8 3/4	7 1/2	35 1/8	120
CRI 5-11	5	1	•	22 7/8	10 5/8	7 1/2	38 1/8	174	-	-	-	-
		3	•	22 7/8	7 1/8	4 3/8	36	113	-	-	-	-
CRI 5-12	5	1	•	23 7/8	10 5/8	7 1/2	39 1/4	175	-	-	-	-
		3	•	23 7/8	7 1/8	4 3/8	37 1/8	114	-	-	-	-
CRI(E) 5-13	5	1	•	25	10 5/8	7 1/2	40 1/4	176	-	-	-	-
		3	•	25	7 1/8	4 3/8	38 1/8	115	8 3/4	7 1/2	40 1/2	159
CRI 5-14	5	1	•	26	10 5/8	7 1/2	41 3/8	178	-	-	-	-
		3	•	26	7 1/8	4 3/8	39 1/4	120	-	-	-	-
CRI 5-15	5	1	•	27 1/8	10 5/8	7 1/2	42 3/8	179	-	-	-	-
		3	•	27 1/8	7 1/8	4 3/8	40 1/4	121	-	-	-	-
CRI(E) 5-16	5	1	•	28 1/8	10 5/8	7 1/2	43 1/2	180	-	-	-	-
		3	•	28 1/8	7 1/8	4 3/8	41 3/8	122	8 3/4	7 1/2	43 5/8	163
CRI 5-18	7 1/2	1	-	30 3/4	10 1/4	7 1/2	46 1/8	193	-	-	-	-
		3	-	30 3/4	8 3/4	5 3/8	46 1/4	181	-	-	-	-
CRI(E) 5-20	7 1/2	1	-	32 7/8	10 1/4	7 1/2	48 1/4	196	-	-	-	-
		3	-	32 7/8	8 3/4	5 3/8	48 3/8	183	8 3/4	7 1/2	48 3/8	196
CRI 5-22	7 1/2	1	-	35	10 1/4	7 1/2	50 3/8	293	-	-	-	-
		3	-	35	8 3/4	5 3/8	50 1/2	280	-	-	-	-
CRI(E) 5-24	7 1/2	1	-	37 1/8	10 1/4	7 1/2	52 1/2	295	-	-	-	-
		3	-	37 1/8	8 3/4	5 3/8	52 5/8	283	8 3/4	7 1/2	52 5/8	296

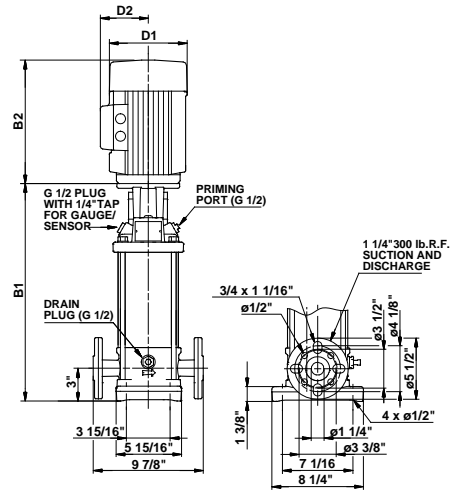
All dimensions in inches unless otherwise noted.

*Oval flanged pump B1 and B1+B2 dimension is one inch less than ANSI flanged pumps and weight is approximately 9 lbs. less.

• Available.



TM03 1454 2205



TM03 1453 2205

Pump type	P2 [hp]	Ph.	PJE*	ANSI dimensions [inch]				Ship Wt. [lbs.]	ANSI dimensions [inch]						
				B1	TEFC				D1	D2	B1+B2	MLE			Ship Wt. [lbs.]
					D1	D2	B1+B2					D1	D2	B1+B2	
CRN(E) 5-2	3/4	1	•	12 1/8	6 1/4	5	22 1/8	71	5 1/2	5 1/2	19 5/8	66			
		3	•	12 1/8	5 5/8	4 5/8	19 3/4	62	-	-	-	-			
CRN(E) 5-3	1	1	•	13 1/4	7 1/4	5 3/4	24 3/8	85	5 1/2	5 1/2	22 1/4	70			
		3	•	13 1/4	5 5/8	4 5/8	20 3/4	64	7	6 5/8	26 1/8	83			
CRN 5-4	1 1/2	1	•	14 1/4	7 1/4	5 3/4	26	89	-	-	-	-			
		3	•	14 1/4	5 5/8	4 5/8	23	65	-	-	-	-			
CRN(E) 5-5	1 1/2	1	•	15 3/8	7 1/4	5 3/4	27	90	5 1/2	5 1/2	24 3/8	75			
		3	•	15 3/8	5 5/8	4 5/8	24 1/8	67	7	6 5/8	28 1/4	88			
CRN 5-6	2	1	•	16 3/8	7 1/4	5 3/4	29	103	-	-	-	-			
		3	•	16 3/8	7 1/8	4 3/8	27 3/4	90	-	-	-	-			
CRN(E) 5-7	2	1	•	17 1/2	7 1/4	5 3/4	30	104	-	-	-	-			
		3	•	17 1/2	7 1/8	4 3/8	28 7/8	94	7	6 5/8	30 3/8	107			
CRN 5-8	3	1	•	19 5/8	8 5/8	6 7/8	34	138	-	-	-	-			
		3	•	19 5/8	7 1/8	4 3/8	31 1/4	99	-	-	-	-			
CRN 5-9	3	1	•	20 3/4	8 5/8	6 7/8	35 1/8	139	-	-	-	-			
		3	•	20 3/4	7 1/8	4 3/8	32 3/8	100	-	-	-	-			
CRN(E) 5-10	3	1	•	21 3/4	8 5/8	6 7/8	36 1/8	141	-	-	-	-			
		3	•	21 3/4	7 1/8	4 3/8	33 3/8	102	8 3/4	7 1/2	35 1/8	120			
CRN 5-11	5	1	•	22 7/8	10 5/8	7 1/2	38 1/8	173	-	-	-	-			
		3	•	22 7/8	7 1/8	4 3/8	36	112	-	-	-	-			
CRN 5-12	5	1	•	23 7/8	10 5/8	7 1/2	39 1/4	175	-	-	-	-			
		3	•	23 7/8	7 1/8	4 3/8	37 1/8	114	-	-	-	-			
CRN(E) 5-13	5	1	•	25	10 5/8	7 1/2	40 1/4	176	-	-	-	-			
		3	•	25	7 1/8	4 3/8	38 1/8	115	8 3/4	7 1/2	40 1/2	159			
CRN 5-14	5	1	•	26	10 5/8	7 1/2	41 3/8	177	-	-	-	-			
		3	•	26	7 1/8	4 3/8	39 1/4	120	-	-	-	-			
CRN 5-15	5	1	•	27 1/8	10 5/8	7 1/2	42 3/8	178	-	-	-	-			
		3	•	27 1/8	7 1/8	4 3/8	40 1/4	121	-	-	-	-			
CRN(E) 5-16	5	1	•	28 1/8	10 5/8	7 1/2	43 1/2	180	-	-	-	-			
		3	•	28 1/8	7 1/8	4 3/8	41 3/8	122	8 3/4	7 1/2	43 5/8	163			
CRN 5-18	7 1/2	1	•	30 3/4	10 1/4	7 1/2	46 1/8	193	-	-	-	-			
		3	•	30 3/4	8 3/4	5 3/8	46 1/4	180	-	-	-	-			
CRN(E) 5-20	7 1/2	1	•	32 7/8	10 1/4	7 1/2	48 1/4	196	-	-	-	-			
		3	•	32 7/8	8 3/4	5 3/8	48 3/8	183	8 3/4	7 1/2	48 3/8	196			
CRN 5-22	7 1/2	1	•	35	10 1/4	7 1/2	50 3/8	292	-	-	-	-			
		3	•	35	8 3/4	5 3/8	50 1/2	279	-	-	-	-			
CRN(E) 5-24	7 1/2	1	•	37 1/8	10 1/4	7 1/2	52 1/2	295	-	-	-	-			
		3	•	37 1/8	8 3/4	5 3/8	52 5/8	282	8 3/4	7 1/2	52 5/8	295			

All dimensions in inches unless otherwise noted.

*PJE flanged pump B1 and B1+B2 dimension is one inch less than ANSI flanged pumps and weight is approximately 9 lbs. less.

• Available.