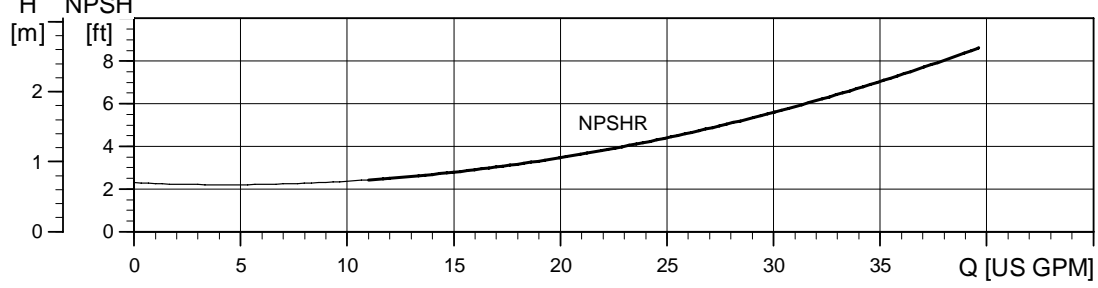
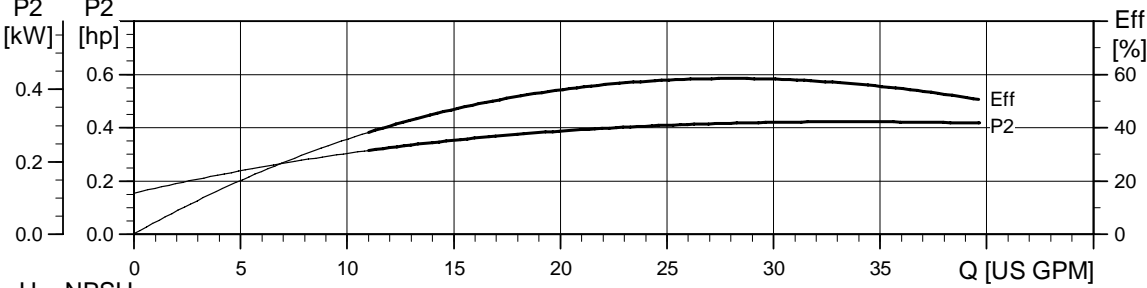
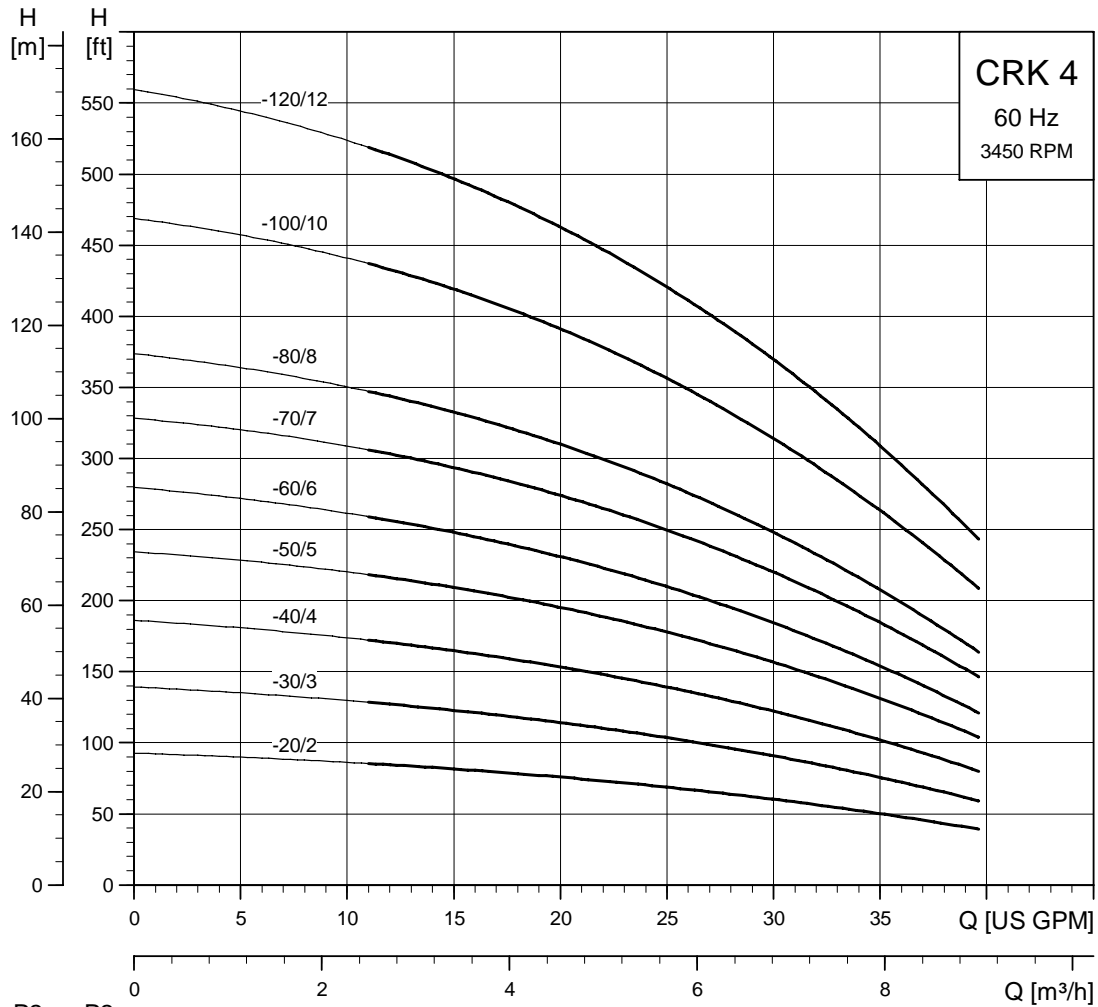


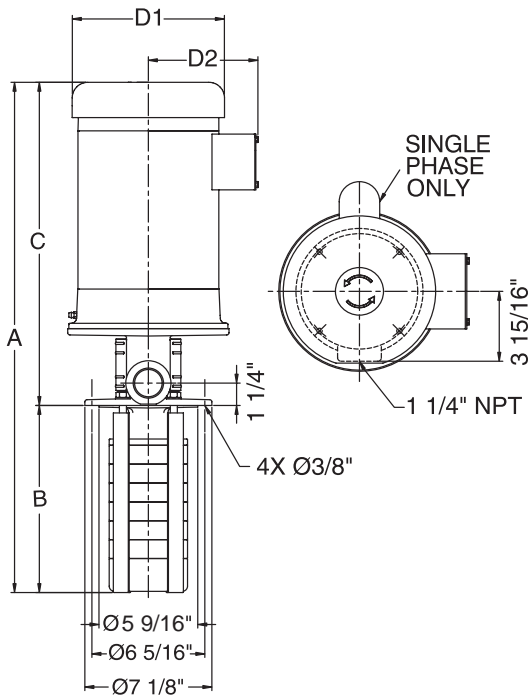
Performance curves

CRK 4

CRK 4



Dimensional sketches



TK00 1920 3297

Dimensions and weights¹

Pump Type	HP	PH	A	B	C	D1	D2	Ship Wt. [lbs.]*
CRK 4-20/2	3/4	1	20 3/4	6 3/4	14	6 1/4	5 1/4	50
		3	18 3/8	6 3/4	11 5/8	5 5/8	4 5/8	41
CRK 4-30/3	1 1/2	1	23 1/2	7 3/4	15 3/4	7 1/4	5 3/4	83
		3	20 5/8	7 3/4	12 7/8	5 5/8	4 5/8	54
CRK 4-40/4	1 1/2	1	24 5/8	8 7/8	15 3/4	7 1/4	5 3/4	100
		3	21 3/4	8 7/8	12 7/8	5 5/8	4 5/8	53
CRK 4-50/5	2	1	26 1/2	9 7/8	16 5/8	7 1/4	5 3/4	103
		3	25 3/8	9 7/8	15 1/2	7 1/8	4 3/8	61
CRK 4-60/6	3	1	29 3/4	11	18 3/4	8 5/8	6 7/8	143
		3	27	11	16	7 1/8	4 3/8	75
CRK 4-70/7	3	1	30 3/4	12	18 3/4	8 5/8	6 7/8	152
		3	28	12	16	7 1/8	4 3/8	94
CRK 4-80/8	3	1	31 7/8	13 1/8	18 3/4	8 5/8	6 7/8	155
		3	29 1/8	13 1/8	16	7 1/8	4 3/8	131
CRK 4-100/10	5	1	34 7/8	15 1/4	19 5/8	10 5/8	7 1/2	201
		3	32 7/8	15 1/4	17 5/8	7 1/8	4 3/8	115
CRK 4-120/12	5	1	37	17 3/8	19 5/8	10 5/8	7 1/2	207
		3	35	17 3/8	17 5/8	7 1/8	4 3/8	133
CRK 4-140/12	5	1	39 1/8	19 1/2	19 5/8	10 5/8	7 1/2	214
		3	37 1/8	19 1/2	17 5/8	7 1/8	4 3/8	172
CRK 4-160/12	5	1	41 1/4	21 5/8	19 5/8	10 5/8	7 1/2	214
		3	39 1/4	21 5/8	17 5/8	7 1/8	4 3/8	172
CRK 4-190/12	5	1	44 3/8	24 3/4	19 5/8	10 5/8	7 1/2	215
		3	42 3/8	24 3/4	17 5/8	7 1/8	4 3/8	173
CRK 4-220/12	5	1	47 5/8	28	19 5/8	10 5/8	7 1/2	216
		3	45 5/8	28	17 5/8	7 1/8	4 3/8	174
CRK 4-330/12	5	1	59 1/4	39 5/8	19 5/8	10 5/8	7 1/2	223
		3	57 1/4	39 5/8	17 5/8	7 1/8	4 3/8	181

* The stated weights apply to CRK only. For CRKI, add 3 lbs.

Electrical data¹

HP	PH	NEMA Frame	Service Factor	Voltage	Motor Eff. [%]	Insul. Class	KVA Code	Full Load Current [A]	Service Factor Current [A]	Start Current [A]	Motor Type
3/4	1	56C	1.25	115/208-230	66	B	K	9.6/5.3-4.8	11.4/6.0-5.7	56/31-28	Baldor
	3	56C	1.25	208-230/460	79/80	F	K	2.4-2.3/1.2	2.9-2.75/1.4	14.2-15/7.8	ML
1 1/2	1	56C	1.3	115/208-230	71	B	K	17/9.5-8.6	20.4/11.3-10.2	106/58.6-53	Baldor
	3	56C	1.15	208-230/460	83/84	F	M	4.7-4.6/2.3	5.2-5.1/2.55	33.8-36.8/ 18.4	ML
2	1	56C	1.15	115/208-230	74	F	K	23/12.7-11.5	25.4/14.1-12.7	156/86.2-78	Baldor
	3	56C	1.15	208-230/460	84.5/ 85.5	F	G	5.7-5.4/2.7	6.55-6.1/3.05	46.2-48.6/ 24.3	ML
3	1	182TC	1.15	115/208-230	75	F	H	29/16-14.5	31.8/18-15.9	170/94-85	Baldor
	3	182TC	1.15	208-230/460	82.5/84	F	K	8.9-8.5/4.25	10.4-9.5/4.75	60.5-63.8/ 31.9	ML
5	1	213TC	1.15	208-230	80	F	J	24-22	27-25	188-170	Baldor
	3	184TC	1.15	208-230/460	84.5/86	F	S	14.2-14/7.0	16-15.4/7.7	109-119/59.5	ML

¹ All specifications are for TEFC motors. ODP motors are available on request. For pumps supplied from Grundfos Canada see Notes on page 4.