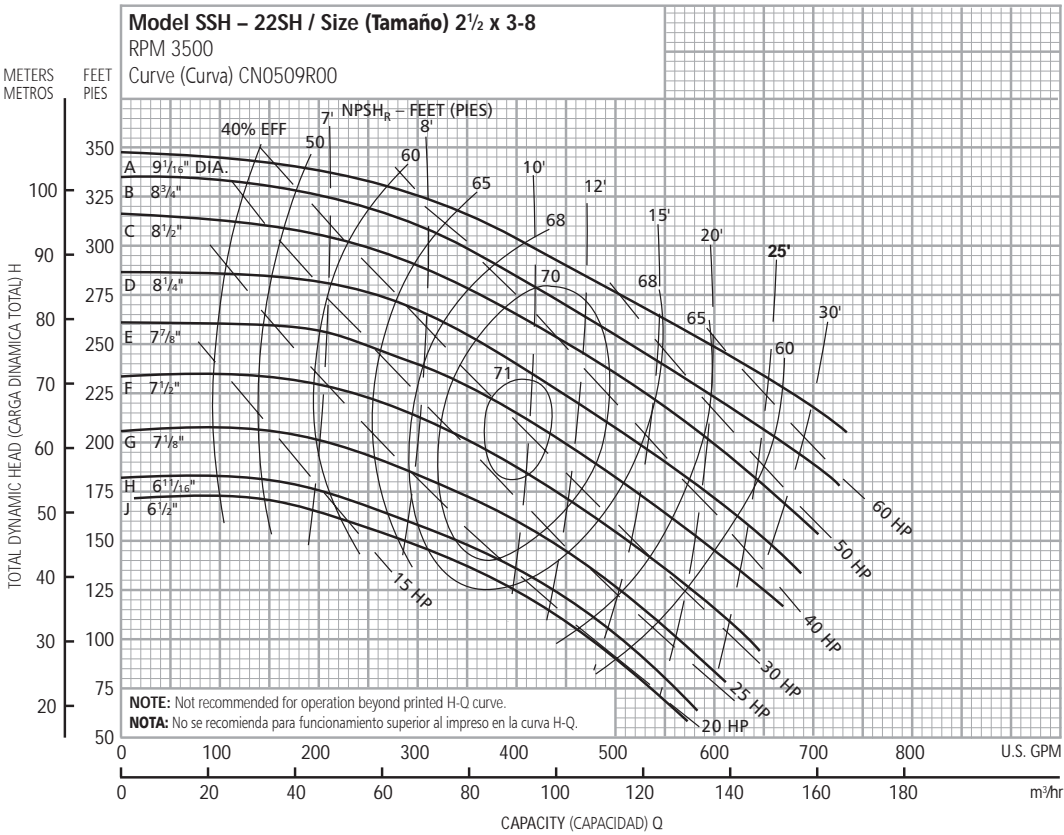


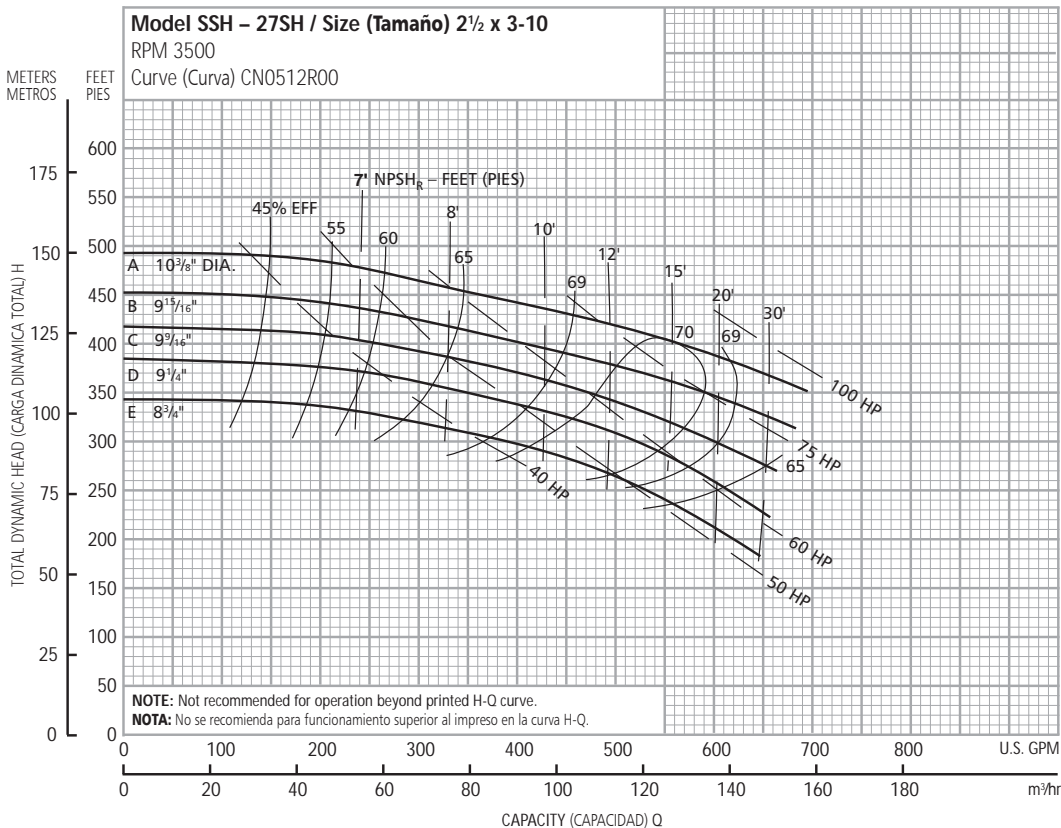
**Performance Curves – 60 Hz, 3500 RPM**  
**Curvas de Funcionamiento – 60 Hz, 3500 RPM**



| Optional Impeller, Impulsor Opcional |            |  |
|--------------------------------------|------------|--|
| Impeller Code, Código del Impulsor   | Dia., Diá. | Standard HP Rating, Estándar HP Potencia |
| A                                    | 9 1/16"    | 60                                       |
| B                                    | 8 3/4"     | 50                                       |
| C                                    | 8 1/2"     | 50                                       |
| D                                    | 8 1/4"     | 40                                       |
| E                                    | 7 7/8"     | 40                                       |
| F                                    | 7 1/2"     | 30                                       |
| G                                    | 7 1/8"     | 25                                       |
| H                                    | 6 11/16"   | 20                                       |
| J                                    | 6 1/2"     | 20                                       |

**NOTE:** Pump will pass a sphere to 1 9/32" diameter.

**NOTA:** La bomba pasará una esfera a 1 9/32" diámetro.



| Optional Impeller, Impulsor Opcional |            |  |
|--------------------------------------|------------|--|
| Impeller Code, Código del Impulsor   | Dia., Diá. | Standard HP Rating, Estándar HP Potencia |
| A                                    | 10 3/8"    | 100                                      |
| B                                    | 9 15/16"   | 75                                       |
| C                                    | 9 9/16"    | 75                                       |
| D                                    | 9 1/4"     | 60                                       |
| E                                    | 8 3/4"     | 50                                       |

**NOTE:** Pump will pass a sphere to 1 9/32" diameter.

**NOTA:** La bomba pasará una esfera a 1 9/32" diámetro.