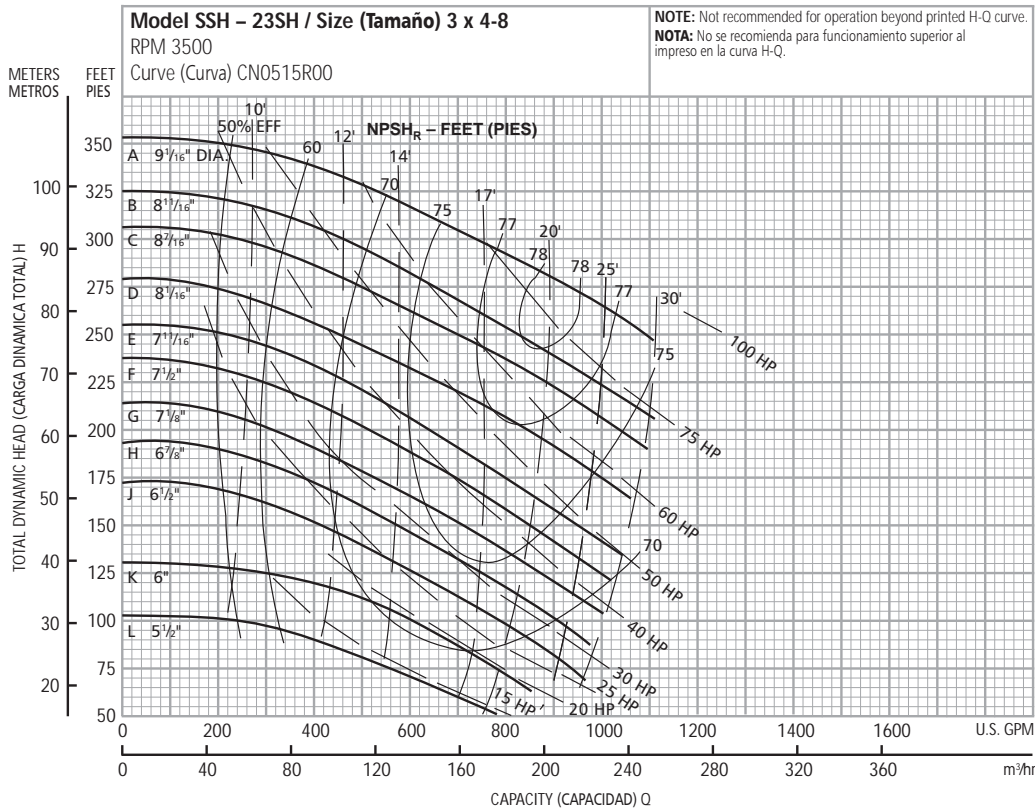


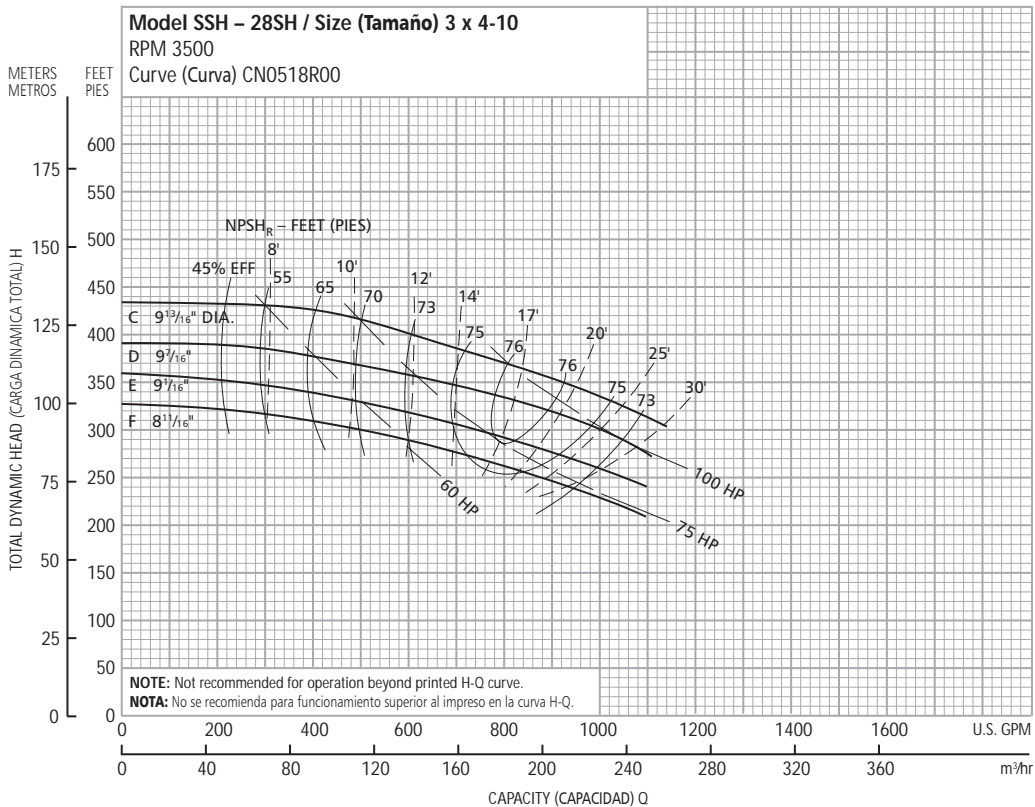
**Performance Curves – 60 Hz, 3500 RPM**  
**Curvas de Funcionamiento – 60 Hz, 3500 RPM**



Optional Impeller, Impulsor Opcional		
Impeller Code, Código del Impulsor	Dia., Diá.	Standard HP Rating, Estándar HP Potencia
A	9 <sup>1</sup> / <sub>16</sub> "	75
B	8 <sup>1</sup> / <sub>16</sub> "	75
C	8 <sup>7</sup> / <sub>16</sub> "	60
D	8 <sup>1</sup> / <sub>16</sub> "	50
E	7 <sup>1</sup> / <sub>16</sub> "	50
F	7 <sup>1</sup> / <sub>2</sub> "	40
G	7 <sup>1</sup> / <sub>8</sub> "	40
H	6 <sup>7</sup> / <sub>8</sub> "	30
J	6 <sup>1</sup> / <sub>2</sub> "	25
K	6"	20
L	5 <sup>1</sup> / <sub>2</sub> "	15

**NOTE:** Pump will pass a sphere to 3/4" diameter.

**NOTA:** La bomba pasará una esfera a 3/4" diámetro.



Optional Impeller, Impulsor Opcional		
Impeller Code, Código del Impulsor	Dia., Diá.	Standard HP Rating, Estándar HP Potencia
C	9 <sup>3</sup> / <sub>16</sub> "	100
D	9 <sup>7</sup> / <sub>16</sub> "	100
E	9 <sup>1</sup> / <sub>16</sub> "	75
F	8 <sup>1</sup> / <sub>16</sub> "	75

**NOTE:** Pump will pass a sphere to 3/4" diameter.

**NOTA:** La bomba pasará una esfera a 3/4" diámetro.