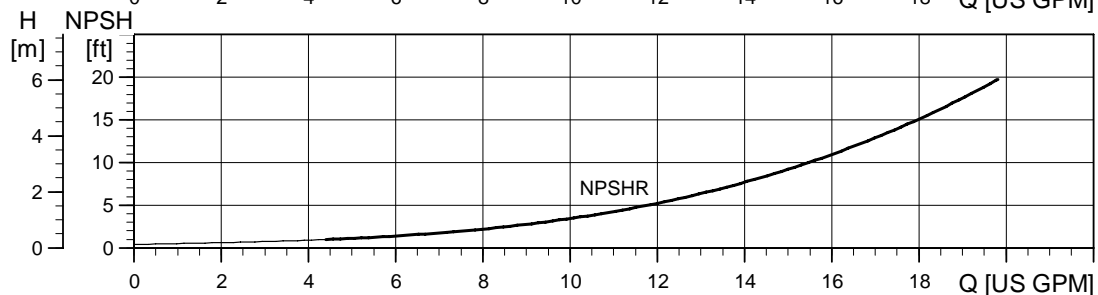
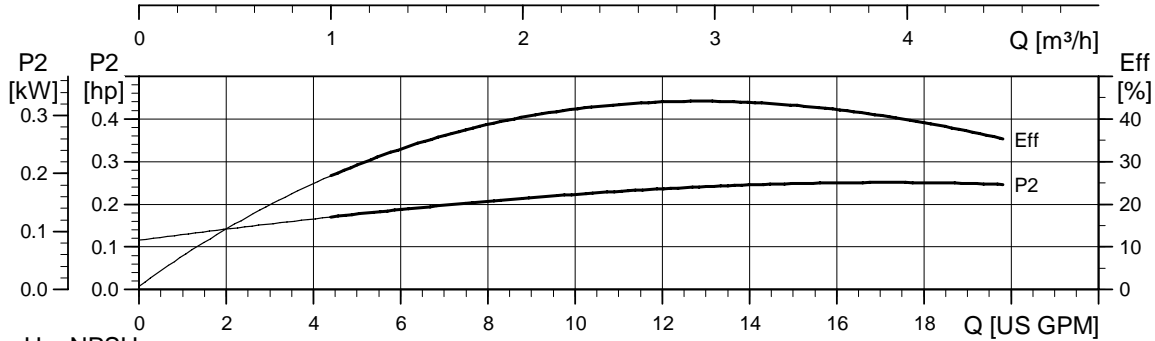
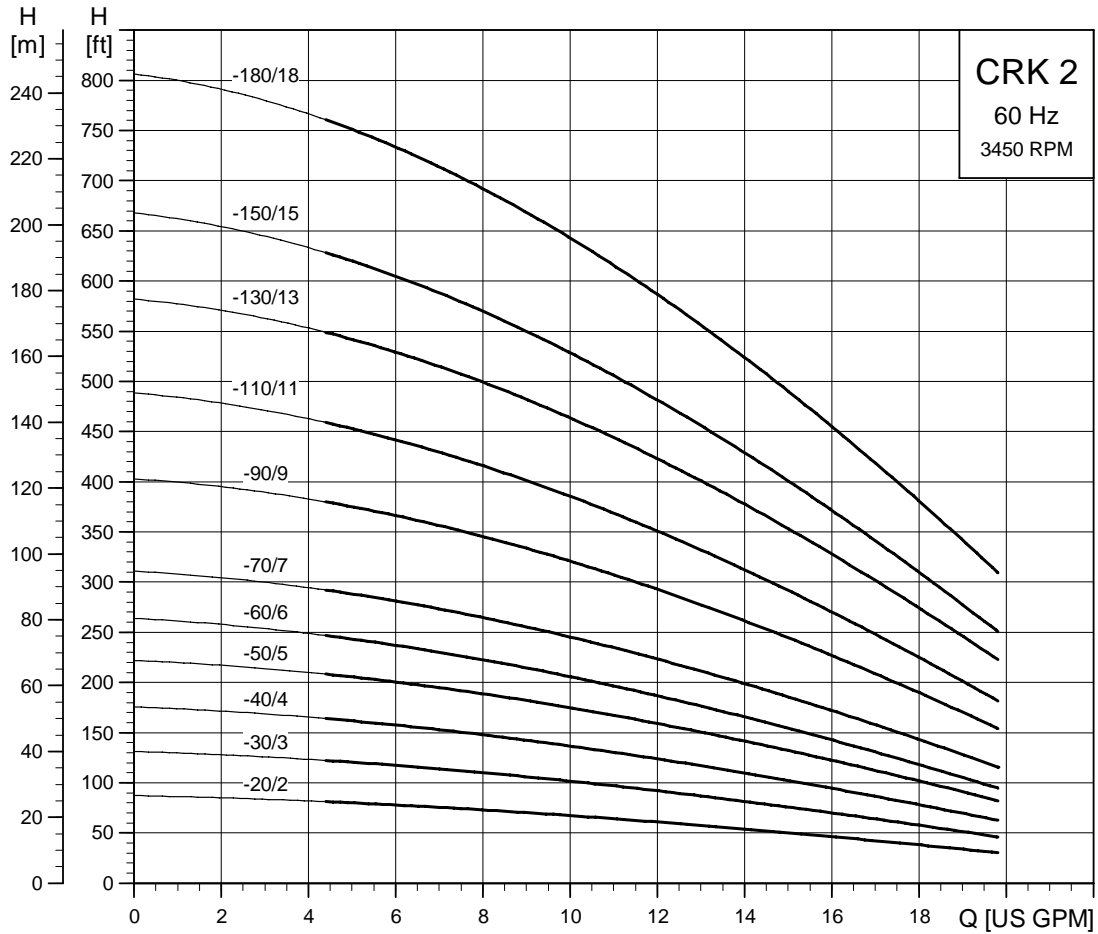


Performance curves/ Technical data

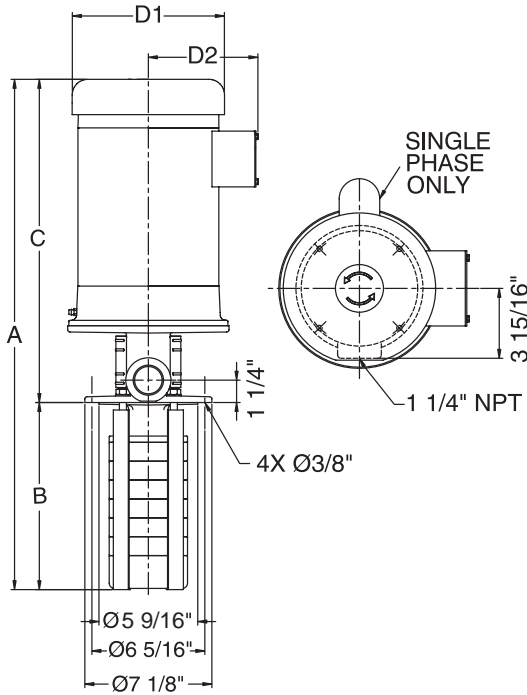
CRK 2

CRK 2



TM03 8991 1704

Dimensional sketches



TK00 1920 3297

Dimensions and weights¹

Pump Type	HP	PH	A	B	C	D1	D2	Ship Wt. [lbs.]*
CRK 2-20/2	1/2	1	19 3/4	6 3/8	13 3/8	6 1/4	5 1/4	46
		3	18	6 3/8	11 5/8	5 5/8	4 5/8	52
CRK 2-30/3	3/4	1	21 1/8	7 1/8	14	6 1/4	5 1/4	63
		3	18 3/4	7 1/8	11 5/8	5 5/8	4 5/8	42
CRK 2-40/4	1	1	23	7 3/4	15 1/4	7 1/4	5 3/4	60
		3	19 3/8	7 3/4	11 5/8	5 5/8	4 5/8	44
CRK 2-50/5	1 1/2	1	24 1/4	8 1/2	15 3/4	7 1/4	5 3/4	65
		3	21 3/8	8 1/2	12 7/8	5 5/8	4 5/8	55
CRK 2-60/6	1 1/2	1	25	9 1/4	15 3/4	7 1/4	5 3/4	85
		3	22 1/8	9 1/4	12 7/8	5 5/8	4 5/8	54
CRK 2-70/7	2	1	26 1/2	9 7/8	16 5/8	7 1/4	5 3/4	110
		3	25 3/8	9 7/8	15 1/2	7 1/8	4 3/8	65
CRK 2-90/9	2	1	28	11 3/8	16 5/8	7 1/4	5 3/4	117
		3	26 7/8	11 3/8	15 1/2	7 1/8	4 3/8	62
CRK 2-110/11	3	1	31 1/2	12 3/4	18 3/4	8 5/8	6 7/8	160
		3	28 3/4	12 3/4	16	7 1/8	4 3/8	88
CRK 2-130/13	3	1	32 7/8	14 1/8	18 3/4	8 5/8	6 7/8	166
		3	30 1/8	14 1/8	16	7 1/8	4 3/8	89
CRK 2-150/15	5	1	35 1/4	15 5/8	19 5/8	10 5/8	7 1/2	212
		3	33 1/4	15 5/8	17 5/8	7 1/8	4 3/8	170
CRK 2-180/18	5	1	37 3/8	17 3/4	19 5/8	10 5/8	7 1/2	221
		3	35 3/8	17 3/4	17 5/8	7 1/8	4 3/8	179
CRK 2-220/18	5	1	40 1/8	20 1/2	19 5/8	10 5/8	7 1/2	221
		3	38 1/8	20 1/2	17 5/8	7 1/8	4 3/8	180
CRK 2-260/18	5	1	43	23 3/8	19 5/8	10 5/8	7 1/2	222
		3	41	23 3/8	17 5/8	7 1/8	4 3/8	180
CRK 2-500/18	5	1	59 1/4	39 5/8	19 5/8	10 5/8	7 1/2	236
		3	57 1/4	39 5/8	17 5/8	7 1/8	4 3/8	194

* The stated weights apply to CRK only. For CRKI, add 3 lbs.

Electrical data¹

HP	PH	NEMA Frame	Service Factor	Voltage	Motor Eff. [%]	Insul. Class	KVA Code	Full Load Current [A]	Service Factor Current [A]	Start Current [A]	Motor Type
1/2	1	56C	1.6	115/208-230	62	B	K	7.4/4.1-3.7	9.8/5.2-4.9	39/21.6-19.5	Baldor
	3	56C	1.25	208-230/460	78/79.5	F	K	1.64-1.55/ 0.78	2.0-1.9/0.95	9.7-10.1/5.1	ML
3/4	1	56C	1.25	115/208-230	66	B	K	9.6/5.3-4.8	11.4/6.0-5.7	56/31-28	Baldor
	3	56C	1.25	208-230/460	79/80	F	K	2.4-2.3/1.2	2.9-2.75/1.4	14.2-15/7.8	ML
1	1	56C	1.25	115/230	66	B	K	12/6.0	14.4/7.2	77/38.5	Baldor
	3	56C	1.25	208-230/460	81/81	F	J	3.25-3.35/ 1.68	4.0-3.9/1.95	19.2-21.8/ 10.9	ML
1 1/2	1	56C	1.3	115/208-230	71	B	K	17/9.5-8.6	20.4/11.3-10.2	106/58.6-53	Baldor
	3	56C	1.15	208-230/460	83/84	F	M	4.7-4.6/2.3	5.2-5.1/2.55	33.8-36.8/ 18.4	ML
2	1	56C	1.15	115/208-230	74	F	K	23/12.7-11.5	25.4/14.1-12.7	156/86.2-78	Baldor
	3	56C	1.15	208-230/460	84.5/ 85.5	F	G	5.7-5.4/2.7	6.55-6.1/3.05	46.2-48.6/ 24.3	ML
3	1	182TC	1.15	115/208-230	75	F	H	29/16-14.5	31.8/18-15.9	170/94-85	Baldor
	3	182TC	1.15	208-230/460	82.5/84	F	K	8.9-8.5/4.25	10.4-9.5/4.75	60.5-63.8/ 31.9	ML
5	1	213TC	1.15	208-230	80	F	J	24-22	27-25	188-170	Baldor
	3	184TC	1.15	208-230/460	84.5/86	F	S	14.2-14/7.0	16-15.4/7.7	109-119/59.5	ML

¹ All specifications are for TEFC motors. ODP motors are available on request. For pumps supplied from Grundfos Canada see Notes on page 4.