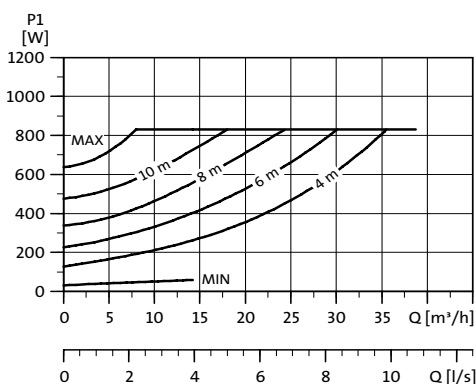
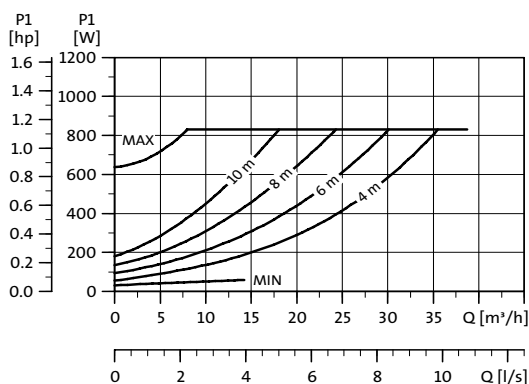
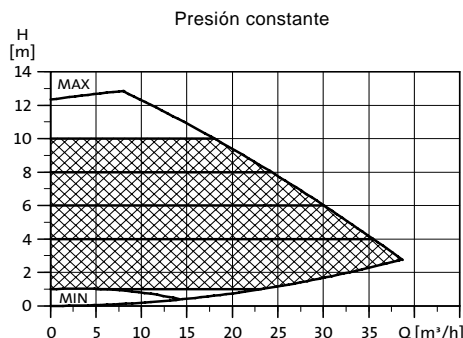
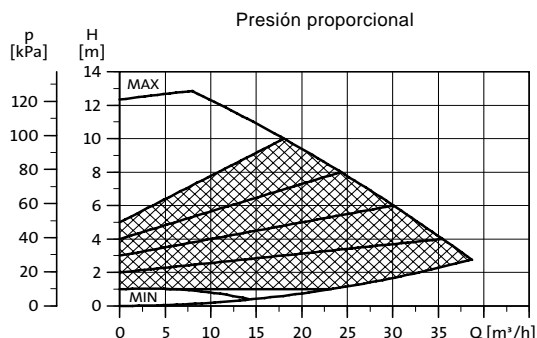


MAGNA 65-120 F

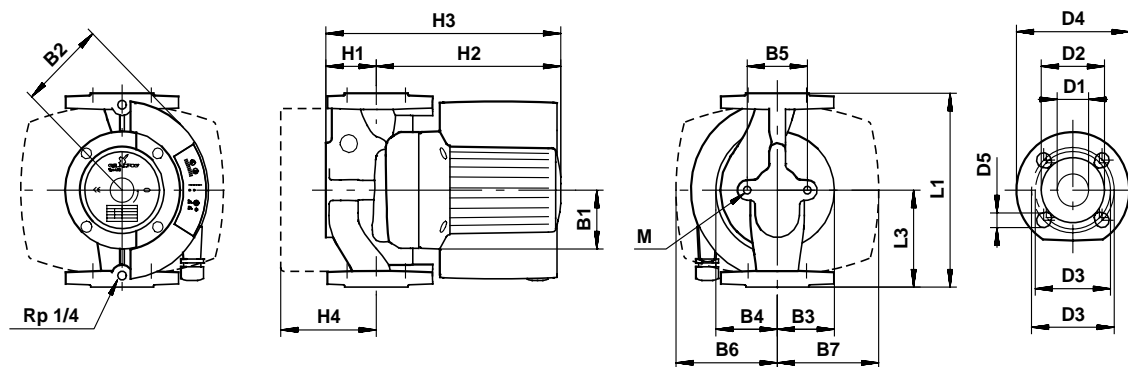


TM02 8815 2204

Datos eléctricos

U_n [V]	P_1 [W]	I_n [A]
1 x 230-240 V	Mín.	35
	Máx.	900
		0,28
		3,9

MAGNA 65-120 F está también disponible con carcasa de acero inoxidable, tipo N.

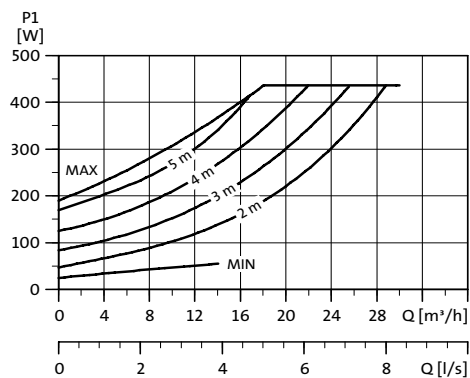
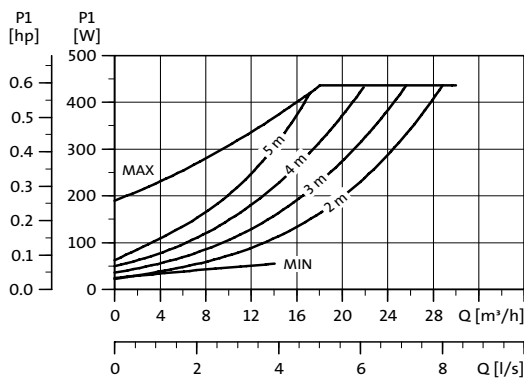
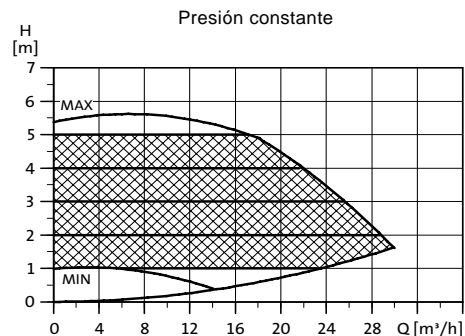
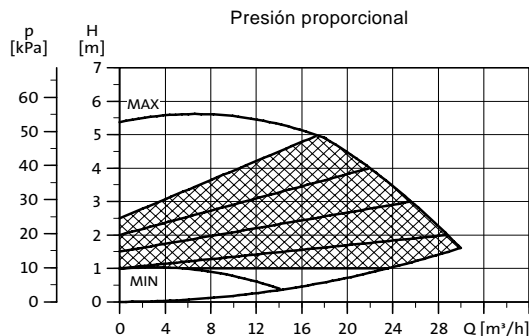


TM02 0239 5101

Dimensiones y pesos

Tipo de bomba PN 6 / PN 10	Dimensiones [mm]																Pesos [kg]		Volumen [m³]			
	L1	L3	B1	B2	B3	B4	B5	B6	B7	H1	H2	H3	H4	D1	D2	D3	D4	D5		M	Neto	Bruto
MAGNA 65-120 F	340	170	77	125	88	104	96	145	145	82	255	335	128	65	119	130/145	185	14/19	M12	25,5	27,5	0,043

MAGNA D 65-60

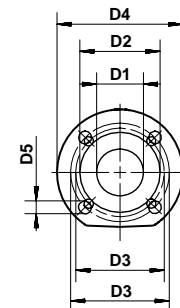
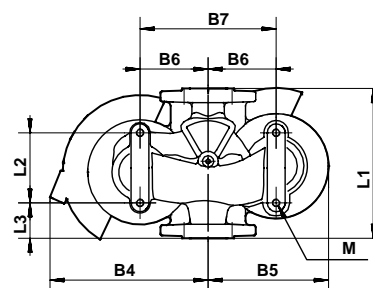
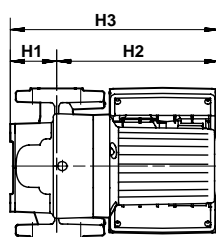
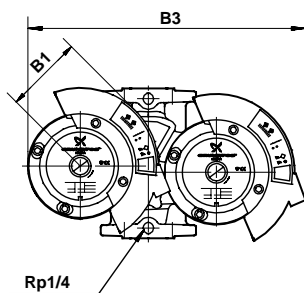


TM02 1913 2204

Datos eléctricos

U_n [V]	P_1 [W]	I_n [A]
1 x 230-240 V	Mín.	25
	Máx.	450

Las curvas y datos eléctricos se refieren a un cabezal de bomba funcionando.



TM02 0790 2601

Dimensiones y pesos

Tipo de bomba PN 6 / PN 10	Dimensiones [mm]																	Pesos [kg]		Volumen [m³]	
	L1	L2	L3	B1	B3	B4	B5	B6	B7	H1	H2	H3	D1	D2	D3	D4	D5	M	Neto		Bruto
MAGNA D 65-60	340	126	60	115	480	270	215	120	240	88	242	330	65	119	130/145	185	14/19	M12	42	49	0,13