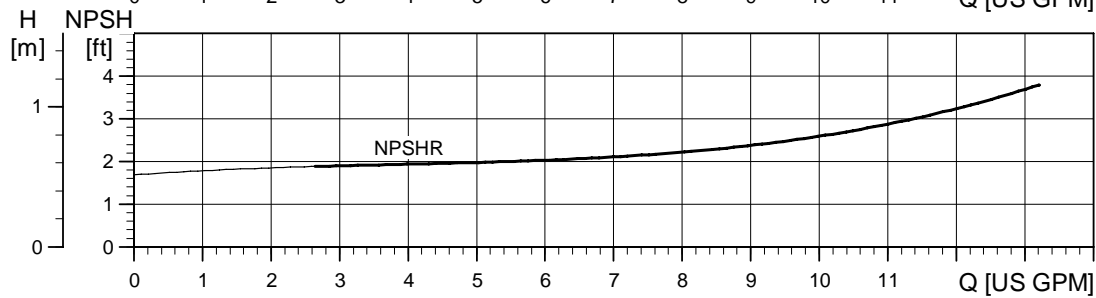
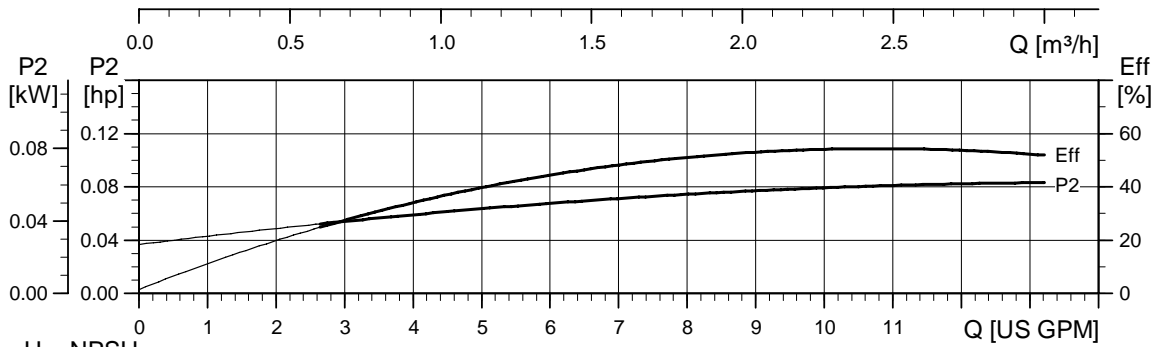
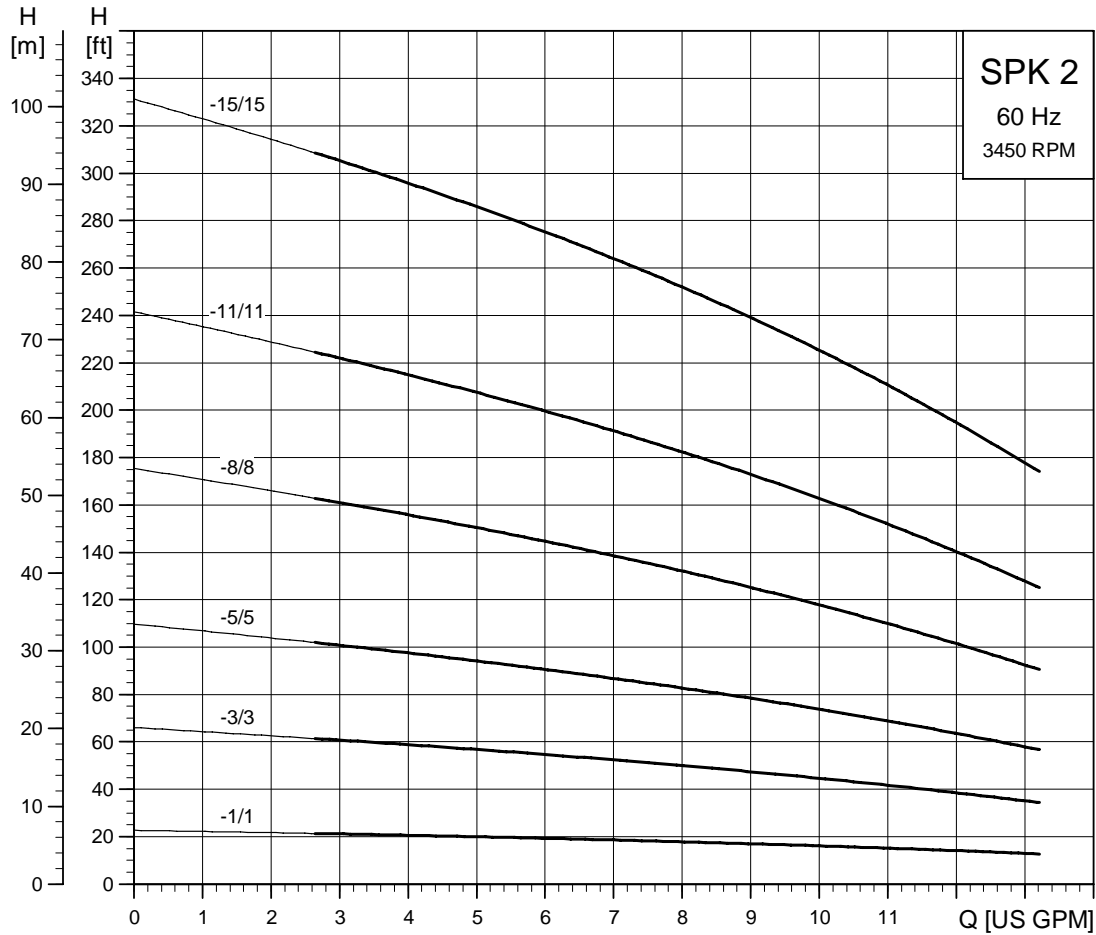


# Performance curves

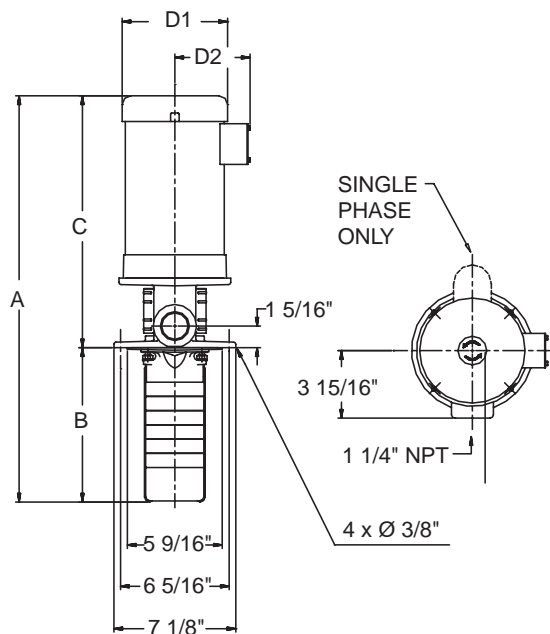
SPK 2

SPK 2



TM03 8488 1707

## Dimensional sketches



TK00 1918 3297

## Dimensions and weights<sup>1</sup>

Pump Type	hp	PH	A	B	C	D1	D2	Ship Wt. [lbs.]*
SPK 2-1/1	1/4	1	19	5 5/8	13 3/8	6 1/4	5 1/4	35
		3	17 1/4	5 5/8	11 5/8	5 5/8	4 5/8	33
SPK 2-3/3	1/4	1	20 5/8	7 1/4	13 3/8	6 1/4	5 1/4	36
		3	18 7/8	7 1/4	11 5/8	5 5/8	4 5/8	36
SPK 2-5/5	1/2	1	22 1/4	8 7/8	13 3/8	6 1/4	5 1/4	38
		3	20 1/2	8 7/8	11 5/8	5 5/8	4 5/8	38
SPK 2-8/8	3/4	1	25 3/8	11 3/8	14	6 1/4	5 1/4	48
		3	23	11 3/8	11 5/8	5 5/8	4 5/8	41
SPK 2-11/11	1	1	29 1/8	13 7/8	15 1/4	7 1/4	5 3/4	62
		3	25 1/2	13 7/8	11 5/8	5 5/8	4 5/8	48
SPK 2-15/15	1 1/2	1	32 7/8	17 1/8	15 3/4	7 1/4	5 3/4	70
		3	30	17 1/8	12 7/8	5 5/8	4 5/8	57
SPK 2-19/15	1 1/2	1	36 1/4	20 1/2	15 3/4	7 1/4	5 3/4	75
		3	33 3/8	20 1/2	12 7/8	5 5/8	4 5/8	63
SPK 2-23/15	1 1/2	1	39 1/2	23 3/4	15 3/4	7 1/4	5 3/4	76
		3	36 5/8	23 3/4	12 7/8	5 5/8	4 5/8	64
SPK 2-23/15	1 1/2	1	55 3/8	39 5/8	15 3/4	7 1/4	5 3/4	86
		3	52 1/2	39 5/8	12 7/8	5 5/8	4 5/8	74

\* The stated weights apply to SPK only. For SPK1, add 2 lbs.

## SPK with extension pipe

Pump Type	hp	PH	A	B	C	D1	D2	Ship Wt. [lbs.]*
SPK 2-23/15	1 1/2	1	55 3/8	39 5/8	15 3/4	7 1/4	5 3/4	86.0
		3	54 3/8	39 5/8	14 3/4	7 1/4	5 3/4	74.0

\* The stated weights apply to SPK only. For SPK1, add 2 lbs.

## Electrical data

HP	PH	NEMA Frame	Service Factor	Voltage	Motor Eff. [%]	Insul. Class	KVA Code	Full Load Current [A]	Service Factor Current [A]	Start Current [A]	Motor Type
1/4	1	56C	1.35	115/230	55	B	K	6.0/3.0	7.6/3.8	28/14	Baldor
	3	56C	1.35	208-230/460	78.5/80	F	L	1.12-1.1/0.55	1.5-1.45/0.75	7.1-10.2/3.9	ML
1/2	1	56C	1.6	115/208-230	62	B	K	7.4/4.1-3.7	9.8/5.2-4.9	39/21.6-19.5	Baldor
	3	56C	1.25	208-230/460	78/79.5	F	K	1.64-1.55/ 0.78	2.0-1.9/0.95	9.7-10.1/5.1	ML
3/4	1	56C	1.25	115/208-230	66	B	K	9.6/5.3-4.8	11.4/6.0-5.7	56/31-28	Baldor
	3	56C	1.25	208-230/460	79/80	F	K	2.4-2.3/1.2	2.9-2.75/1.4	14.2-15/7.8	ML
1	1	56C	1.25	115/230	66	B	K	12/6.0	14.4/7.2	77/38.5	Baldor
	3	56C	1.25	208-230/460	81/81	F	J	3.25-3.35/ 1.68	4.0-3.9/1.95	19.2-21.8/ 10.9	ML

<sup>1</sup>All specifications are for TEFC motors. ODP motors are available on request. For pumps supplied from Grundfos Canada see Notes on page 4.

## Flange to strainer length options

Flange to strainer length options (dimension B)											
Pump Type	No. of Impellers	hp	Inches								Stages / Impellers
			5 5/8	7 1/4	8 7/8	11 3/8	13 7/8	17 1/8	20 1/2	23 3/4	
SPK 2	1	1/3	-1/1	-3/1	-5/1	-8/1	-11/1	-15/1	-19/1	-23/1	All SPK models with extension pipe
SPK 2	3	1/3		-3/3	-5/3	-8/3	-11/3	-15/3	-19/3	-23/3	
SPK 2	5	1/2			-5/5	-8/5	-11/5	-15/5	-19/5	-23/5	
SPK 2	8	3/4				-8/8	-11/8	-15/8	-19/8	-23/8	
SPK 2	11	1					-11/11	-15/11	-19/11	-23/11	
SPK 2	15	1 1/2						-15/15	-19/15	-23/15	