

3. MTA(H)

Introduction



Fig. 66 Grundfos MTA

Grundfos' MTA range of single-stage immersible pumps has been designed especially for transfer of liquids containing chips, fibers and abrasive particles in filtering systems in the machine tool industry.

These low-pressure pumps are available in nine different variants and come with a choice of top suction or bottom suction.

The pumps are designed to be mounted on top of tanks with the pump part immersed into the pumped liquid.

The pump is designed to be maintenance free, and therefore does not contain shaft seals or other wear parts.

Applications

The MTA(H) pumps are suitable for these applications:

- boring
- sawing
- milling
- grinding
- filtration.

Multiple applications

The compact MTA pumps efficiently transport liquid containing chips, fibers and abrasive particles to the filtering unit. Semi-open impellers allow the passing of chips up to 0.40 in. (10 mm), making the pumps ideal for removing liquid from machining processes.

Pumped liquids

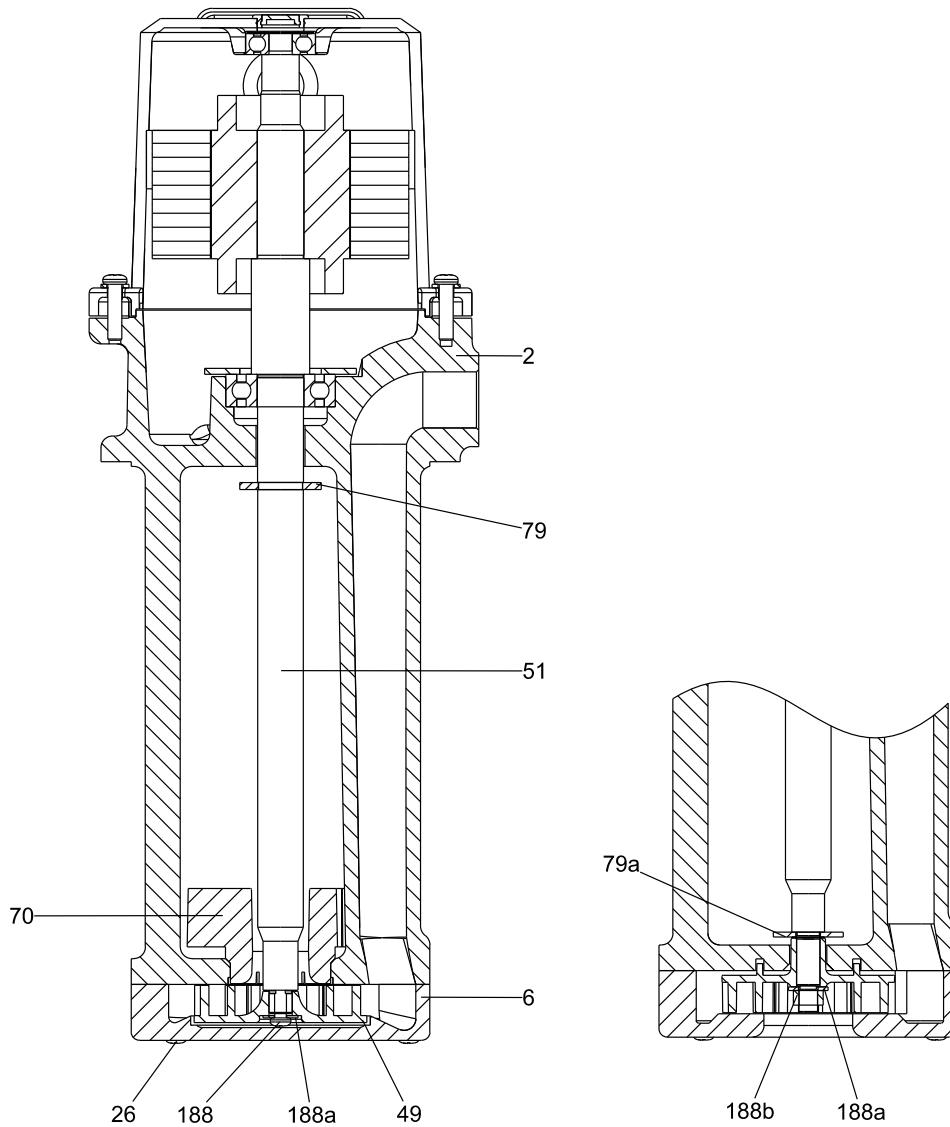
Pump	Max. particle size [in. (mm)]
MTA 30	0.16 - 0.20 (4-5)
MTA 60	
MTA 90	
MTA 120	0.31 - 0.40 (8-10)
MTA 200	
MTA 20H	0.16 - 0.20 (4-5)
MTA 40H	
MTA 70H	
MTA 100H	

Max. kinematic viscosity [cSt]: 90.

TM05 1132 2211

MTA(H) construction

MTA 30, 60, 90, 20H, 40H, 70H

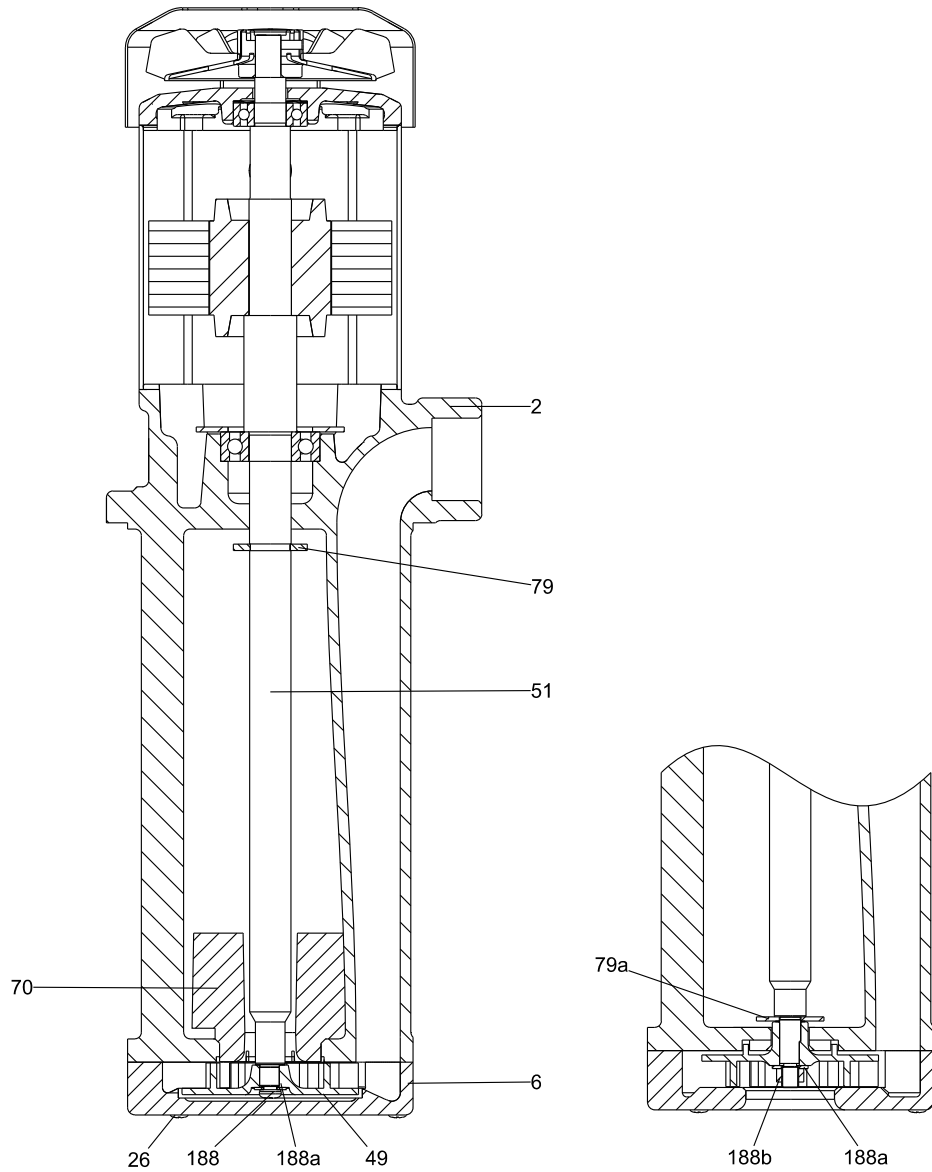


TM05 0894 2111

Pos.	Description	Material	EN/DIN	AISI/ASTM	JIS
2	Pump head	Cast iron	GG20	A48-CL30	FC200
6	Pump housing	Cast iron	GG20	A48-CL30	FC200
26	Screw	Stainless steel	1.4301	A276-304	SUS304
49	Impeller	MTA 30, 60, 90, 70H*	PAA GF50		
		MTA 20H, 40H, 70H**	Bronze casting	G-CuZn-5ZnPb	C92200
51	Shaft with rotor	Steel	C45	A108-1045	S45C
70	Vortex preventer	MTA 90	PP		
79	Thrower	NBR			
79a	Splash ring	Steel	1623 ST 12	A366	SPCC
188	Phillips head screw	Stainless steel	1.4301	A276-304	SUS304
188a	Washer	Stainless steel	1.4301	A276-304	SUS304
188b	Hex head nut	Stainless steel	1.4301	A276-304	SUS304

* MTA 70H, bottom suction

** MTA 70H, top suction



TM05 0895 2111

Pos.	Description	Materials	EN/DIN	AISI/ASTM	JIS
2	Pump head	Cast iron	GG20	A48-CL30	FC200
6	Pump housing	Cast iron	GG20	A48-CL30	FC200
26	Screw	Stainless steel	1.4301	A276-304	SUS304
49	Impeller	Bronze casting	G-CuZn-5ZnPb	C92200	BC7
		MTA 120	PAA GF 50		
51	Shaft with rotor	Steel	C45	A108-1045	S45C
70	Vortex preventer	MTA 120	PP		
79	Thrower	NBR			
79a	Splash ring	Steel	1623 ST 12	A366	SPCC
188	Cross-head screw	Stainless steel	1.4301	A276-304	SUS304
188a	Washer	Stainless steel	1.4301	A276-304	SUS304
188b	Hexagon nut	Stainless steel	1.4301	A276-304	SUS304
	Terminal box	Aluminium			

MTA(H) performance range

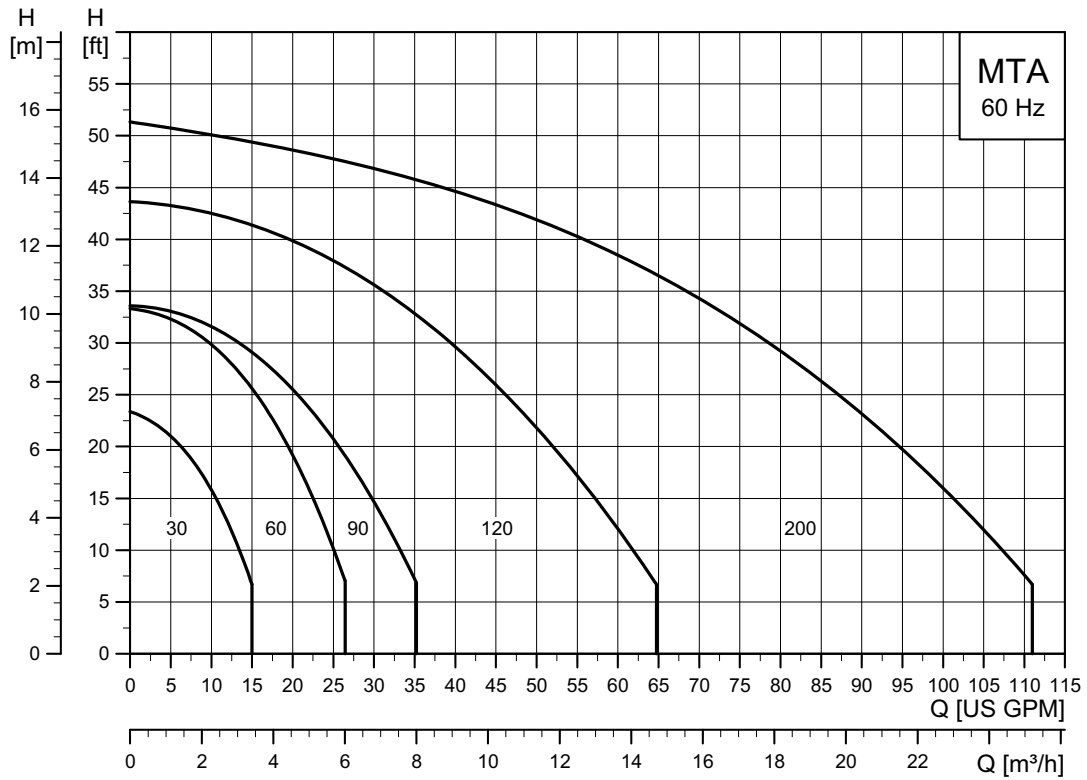


Fig. 67 Performance range, MTA, 60 Hz

TM05 4977 3112

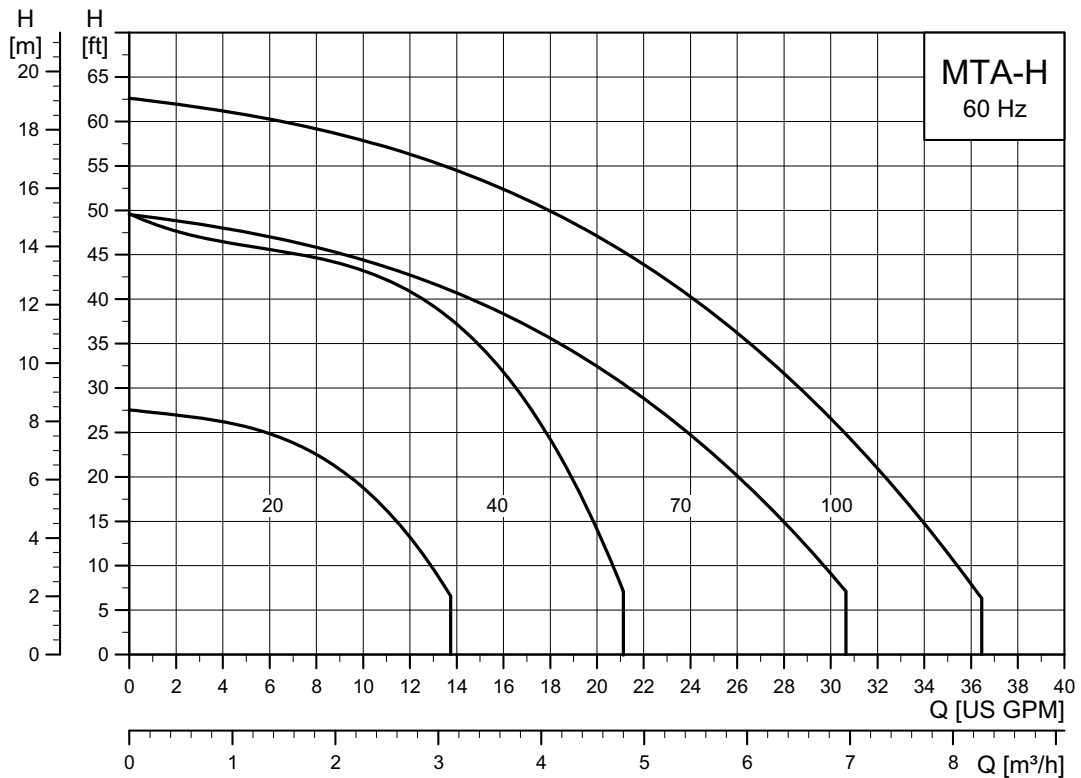


Fig. 68 Performance range, MTA-H, 60 Hz

TM05 4976 3112