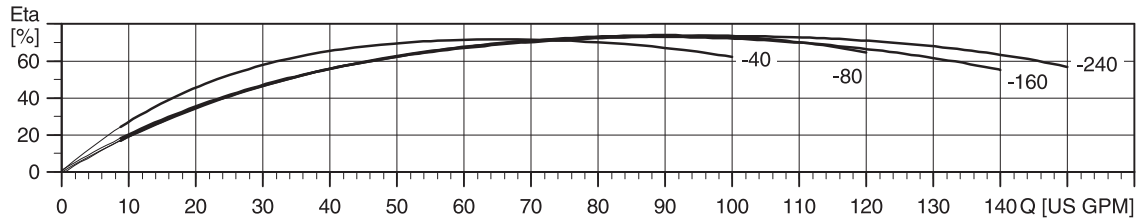
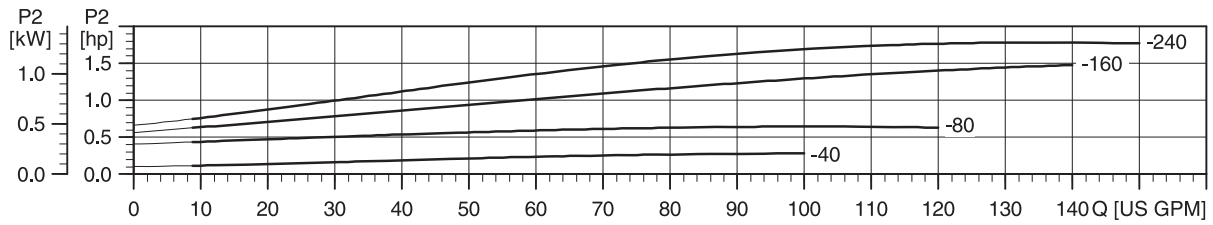
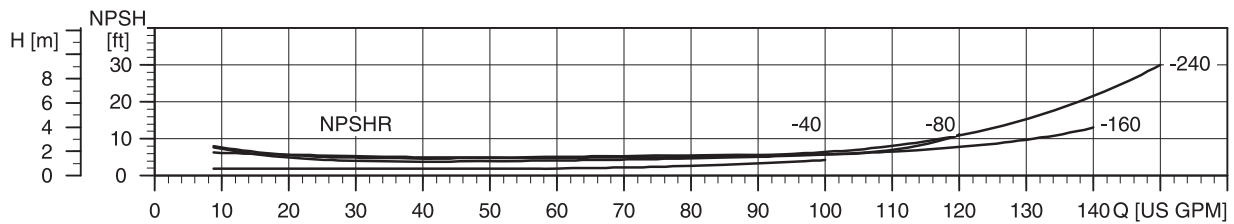
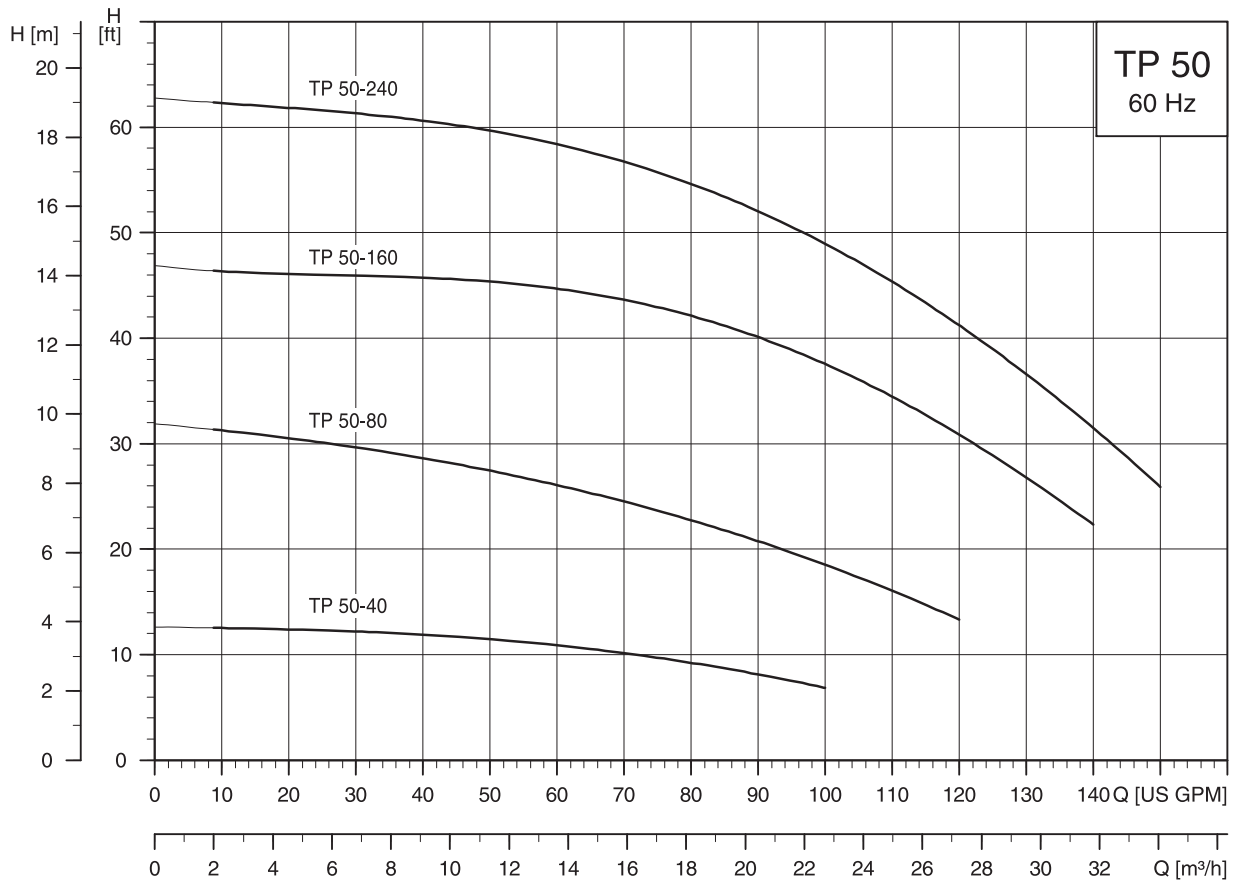
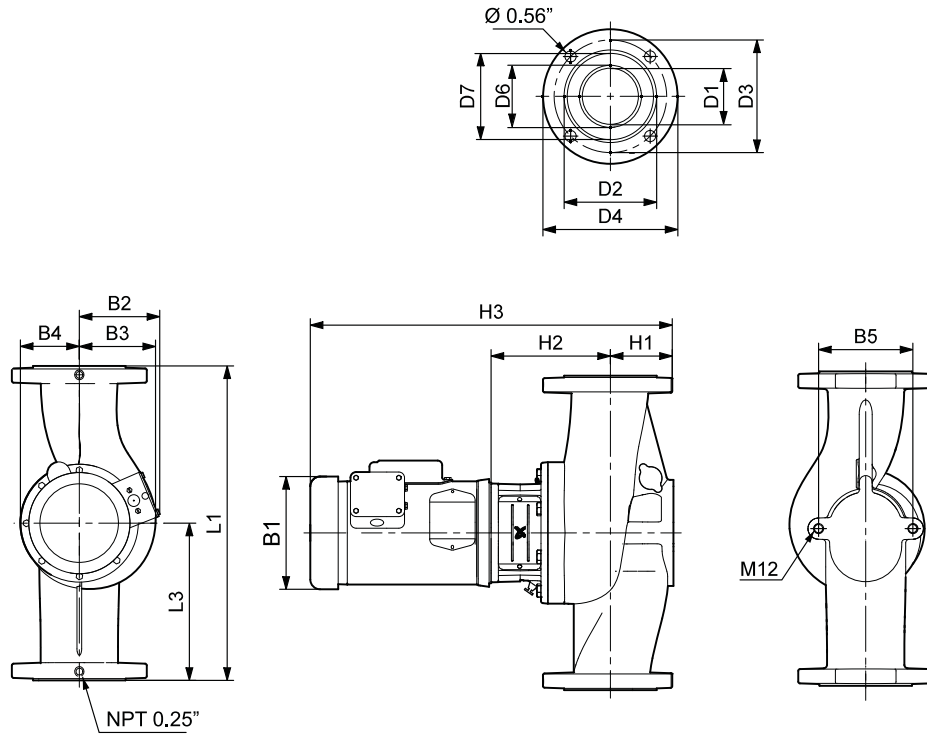


TP 50-XX





TM05 1954 4011

**Dimensions and weights TP 50-XX**

Pump type	Hp	Ph	Dimensions [inches (mm)]																	Net weight [lbs]
			L1	L3	B1	B2	B3	B4	B5	H1	H2	H3	D1	D2	D3	D4	D6	D7		
TP 50-40/4	0.33	1	14 (356)	7 (178)	6.19 (157)	5.19 (132)	3.56 (90)	3 (76)	4.72 (120)	3.23 (82)	6.20 (157)	18.72 (475)	2.09 (53)	3.39 (86)	4.06 (103)	5.25 (133)	2.5 (64)	3.06 (78)	54	
	0.33	3	14 (356)	7 (178)	6.19 (157)	5.19 (132)	3.56 (90)	3 (76)	4.72 (120)	3.23 (82)	6.20 (157)	18.72 (475)	2.09 (53)	3.39 (86)	4.06 (103)	5.25 (133)	2.5 (64)	3.06 (78)	53	
TP 50-80/2	0.75	1	11.5 (292)	5.75 (146)	6.19 (157)	5.19 (132)	3.75 (95)	3 (76)	4.72 (120)	2.95 (75)	6.26 (159)	18.50 (470)	2.09 (53)	3.46 (88)	4.06 (103)	5.25 (133)	2.5 (64)	3.06 (78)	58	
	0.75	3	11.5 (292)	5.75 (146)	5.55 (141)	4.57 (116)	3.75 (95)	3 (76)	4.72 (120)	2.95 (75)	6.26 (159)	16.65 (423)	2.09 (53)	3.46 (88)	4.06 (103)	5.25 (133)	2.5 (64)	3.06 (78)	57	
TP 50-160/2	1.5	1	14 (356)	7 (178)	7.19 (183)	5.74 (146)	4 (102)	4 (102)	4.72 (120)	2.95 (75)	5.83 (148)	20.46 (520)	2.09 (53)	3.46 (88)	4.06 (103)	5.25 (133)	2.5 (64)	3.06 (78)	67	
	1.5	3	14 (356)	7 (178)	5.55 (141)	4.57 (116)	4 (102)	4 (102)	4.72 (120)	2.95 (75)	5.83 (148)	17.40 (442)	2.09 (53)	3.46 (88)	4.06 (103)	5.25 (133)	2.5 (64)	3.06 (78)	66	
TP 50-240/2	2	1	14 (356)	7 (178)	7.19 (183)	5.74 (146)	4 (102)	4 (102)	4.72 (120)	2.95 (75)	5.83 (148)	21.34 (542)	2.09 (53)	3.46 (88)	4.06 (103)	5.25 (133)	2.5 (64)	3.06 (78)	71	
	2	3	14 (356)	7 (178)	7.01 (178)	4.33 (110)	4 (102)	4 (102)	4.72 (120)	2.95 (75)	5.83 (148)	20.00 (508)	2.09 (53)	3.46 (88)	4.06 (103)	5.25 (133)	2.5 (64)	3.06 (78)	70	

**Note:** For information about motor data, see page 25.

**Technical data**

Flow range:	8-150 U.S. gpm
Head range:	7-63 ft
Maximum working pressure:	145 psi (10 bar)
Temperature range:	5 °F (-15 °C) to 284 °F (140 °C)
Max ambient air temperature:	104 °F (40 °C)
Motors:	TEFC-Standard, ODP-Optional
Flanges:	2" 4 bolt with (4) .56" dia. holes